

LOC/DME I-PVG 110.75 Chan 44 (Y)	APP CRS 102°	Rwy Idg TDZE Apt Elev	5350 28 28
-----------------------------------------------	------------------------	-----------------------------	---------------------------------------

ILS or LOC RWY 10

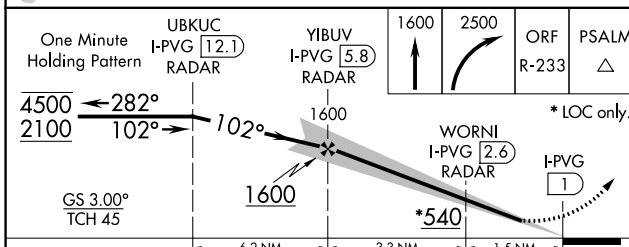
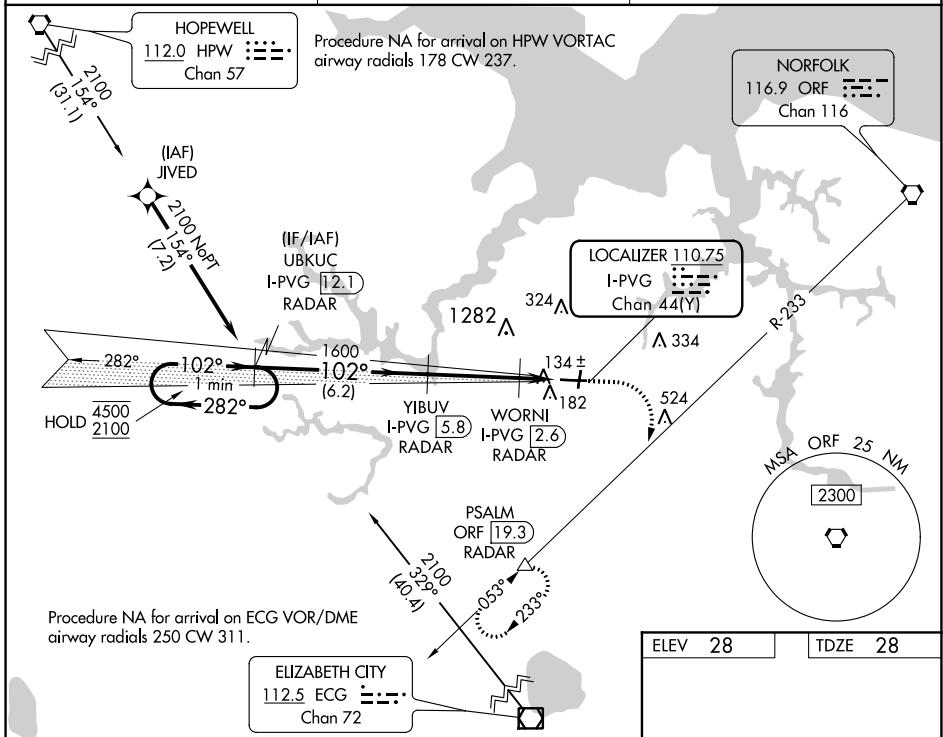
HAMPTON ROADS EXEC (PVG)

RNAV 1-GPS or RADAR required for procedure entry. DME or RADAR required.

▼ Circling NA to Rwy's 2 and 20. Circling NA for Cat C north of Rwy's 10-28.
▲ NA Autopilot coupled approach NA below 800.

MISSED APPROACH: Climb to 1600 then climbing right turn to 2500 on ORF VORTAC R-233 to PSALM/ORF 19.3 DME/RADAR and hold.

AWOS-3PT 118.375	NORFOLK APP CON 118.9 353.7	UNICOM 122.725 (CTAF) 0
----------------------------	---------------------------------------	------------------------------------------



ELEV 28	TDZE 28
---------	---------

102° 4.8 NM from FAF

5350 X 100

3750 X 70

20

2

HIRL Rwy 10-28 **1**

REIL Rwy's 10 and 28 **1**

MIRL Rwy's 2-20 **1**

FAF to MAP 4.8 NM

Knots	60	90	120	150	180
Min:Sec	4:48	3:12	2:24	1:55	1:36

NE-3, 07 OCT 2021 to 04 NOV 2021

NE-3, 07 OCT 2021 to 04 NOV 2021