

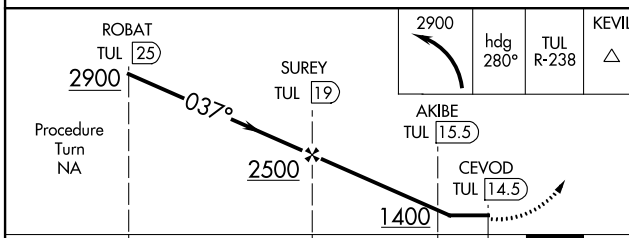
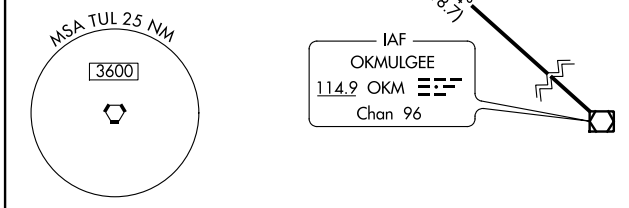
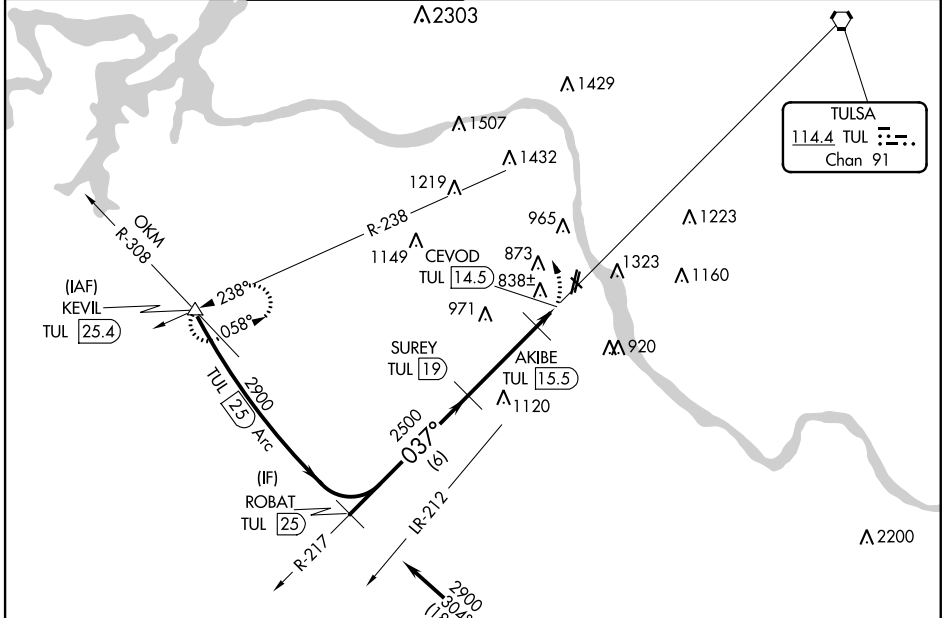
VORTAC TUL <b>114.4</b> Chan <b>91</b>	APP CRS <b>037°</b>	Rwy Idg TDZE Apt Elev <b>N/A</b> <b>N/A</b> <b>638</b>
--	------------------------	---

**VOR/DME-A**  
RICHARD LLOYD JONES JR (RVS)

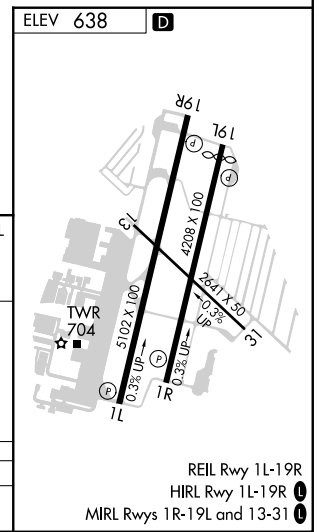
When local altimeter setting not received, use Tulsa Int altimeter setting and increase MDA 40 feet; increase Cat C/D visibilities ¼ mile.

MISSED APPROACH: Climbing left turn to 2900 via heading 280° and TUL R-238 to KEVIL Int/TUL 25.4 DME and hold.

ATIS <b>126.5</b>	TULSA APP CON <b>134.7</b>	RIVERSIDE TOWER* <b>120.3</b> (CTAF) <b>0</b>	GND CON <b>121.7</b>	CLNC DEL <b>124.5</b>	CLNC DEL <b>121.7</b> (When twr closed)	UNICOM <b>122.95</b>
----------------------	-------------------------------	--	-------------------------	--------------------------	---	-------------------------



CATEGORY	A	B	C	D
CIRCLING	1260-1 622 (700-1)	1280-1 642 (700-1)	1280-1 ¾ 642 (700-1 ¾)	1380-2 ½ 742 (800-2 ½)



REIL Rwy 1L-19R  
HIRL Rwy 1L-19R **0**  
MIRL Rws 1R-19L and 13-31 **0**

SC-1, 07 OCT 2021 to 04 NOV 2021

SC-1, 07 OCT 2021 to 04 NOV 2021