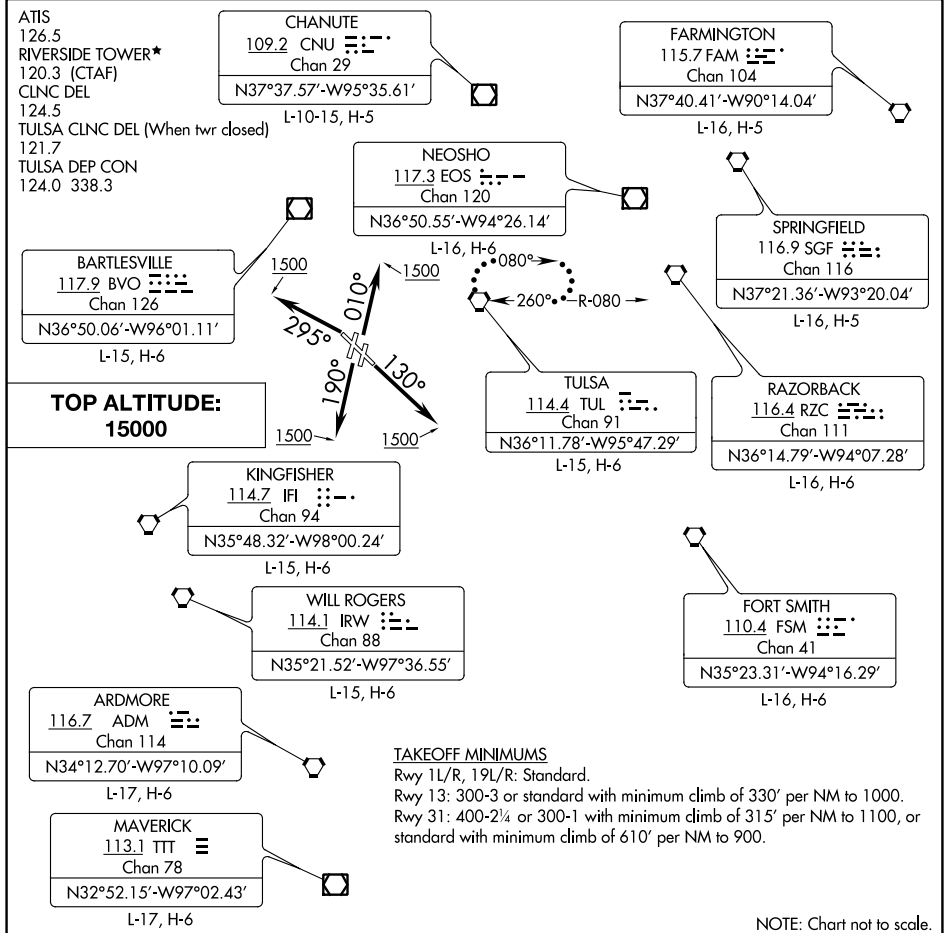


# TULSA EIGHT DEPARTURE

AL-5427 (FAA)

RICHARD LLOYD JONES JR (RVS)  
TULSA, OKLAHOMA



SC-1, 07 OCT 2021 to 04 NOV 2021

SC-1, 07 OCT 2021 to 04 NOV 2021

## DEPARTURE ROUTE DESCRIPTION

**TAKEOFF RUNWAYS 1L/R:** Climb on heading 010° to 1500, then...

**TAKEOFF RUNWAY 13:** Climb on heading 130° to 1500, then...

**TAKEOFF RUNWAYS 19L/R:** Climb on heading 190° to 1500, then...

**TAKEOFF RUNWAY 31:** Climb on heading 295° to 1500, then...

...continue on assigned heading for RADAR vectors to assigned route, maintain 15000 or assigned lower altitude, expect further clearance to filed altitude 10 minutes after departure.

**LOST COMMUNICATIONS:** Proceed to and hold east of TUL VORTAC on the 080° radial. Climb to 15000 feet or lower requested altitude, then proceed on course on filed route. Climb to requested altitude when established on course.