

TULSA, OKLAHOMA

AL-5427 (FAA)

21280

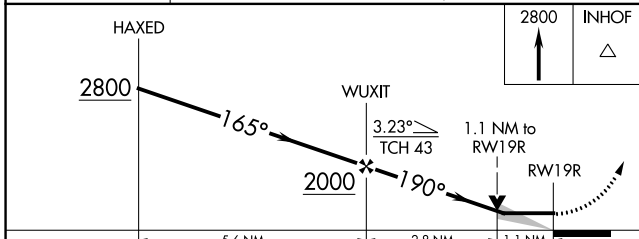
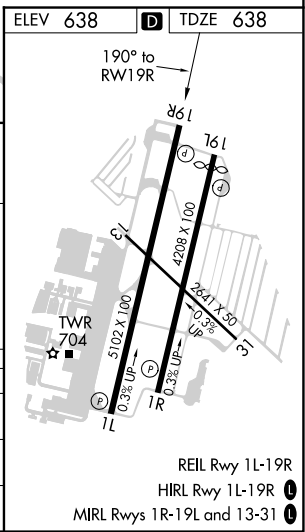
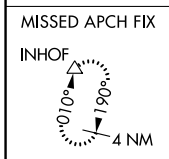
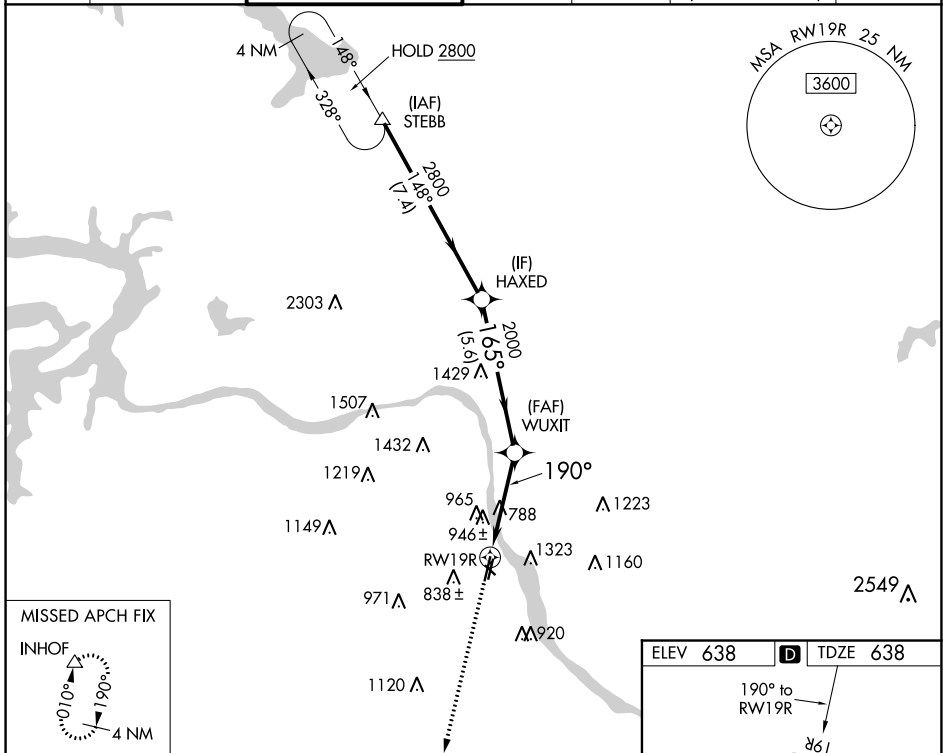
WAAS CH <b>81939</b> <b>W19A</b>	APP CRS <b>190°</b>	Rwy Idg TDZE <b>638</b> Apt Elev <b>638</b>	<b>5102</b>
--	------------------------	---	-------------

# RNAV (GPS) RWY 19R

RICHARD LLOYD JONES JR (RVS)

<b>▽</b> <b>▲</b>	<p>Circling NA northeast of Rwy 31 and 19L. DME/DME RNP-0.3 NA.</p>	<p>MISSED APPROACH: Climb to 2800 direct INHOF and hold.</p>
----------------------	---	--

ATIS <b>126.5</b>	TULSA APP CON <b>134.7</b>	RIVERSIDE TOWER * <b>120.3</b> (CTAF) <b>0</b>	GND CON <b>121.7</b>	CLNC DEL <b>124.5</b>	CLNC DEL <b>121.7</b> (When twr closed)	UNICOM <b>122.95</b>
----------------------	-------------------------------	---	-------------------------	--------------------------	---	-------------------------



CATEGORY	A	B	C	D
LP MDA	1040-1	402 (500-1)	1040-1 $\frac{1}{8}$	402 (500-1 $\frac{1}{8}$ )
LNVA MDA	1200-1	562 (600-1)	1200-1 $\frac{5}{8}$	562 (600-1 $\frac{5}{8}$ )
<b>C</b> CIRCLING	1260-1 622 (700-1)	1280-1 642 (700-1)	1280-1 $\frac{3}{4}$ 642 (700-1 $\frac{3}{4}$ )	1380-2 $\frac{1}{2}$ 742 (800-2 $\frac{1}{2}$ )

TULSA, OKLAHOMA  
Amdt 1 02MAR17

36°02'N-95°59'W

# RICHARD LLOYD JONES JR (RVS)

## RNAV (GPS) RWY 19R

REIL Rwy 1L-19R  
HIRL Rwy 1L-19R **0**  
MIRL Rwy 1R-19L and 13-31 **0**

SC-1, 07 OCT 2021 to 04 NOV 2021

SC-1, 07 OCT 2021 to 04 NOV 2021