

| | | | |
|--|------------------------|-----------------------------|---|
| WAAS CH 86833 W17A | APP CRS 173° | Rwy Idg TDZE Apt Elev | 5701 2918 2918 |
|--|------------------------|-----------------------------|---|

RNAV (GPS) RWY 17

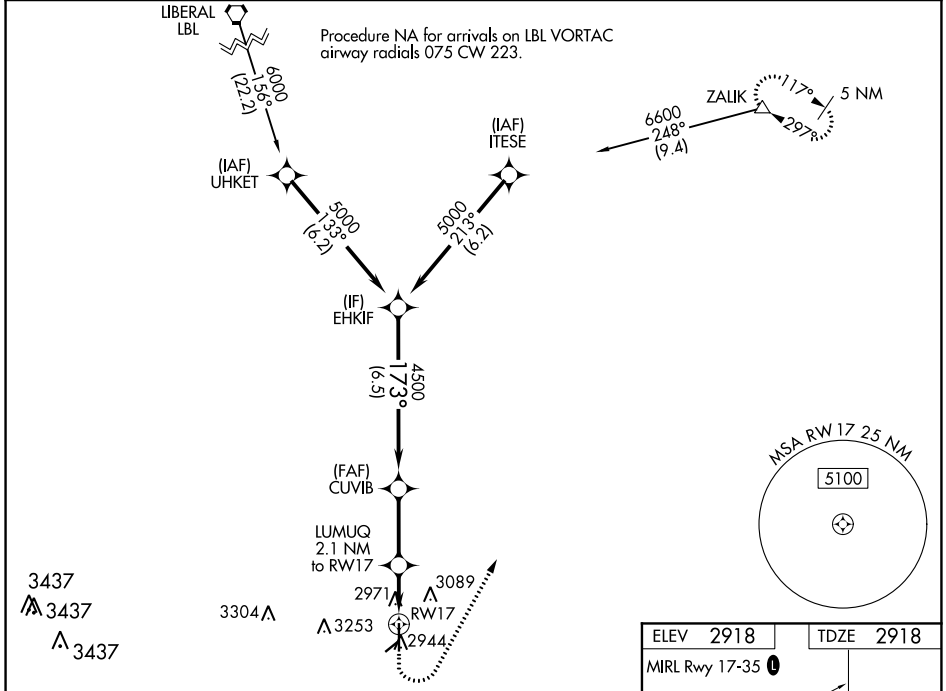
PERRYTON OCHILTREE COUNTY (PYX)

RNP APCH - GPS.

Baro-VNAV and VDP NA when using Gage altimeter setting. For uncompensated Baro-VNAV systems, LNAV/VNAV NA below -20°C or above 54°C. When local altimeter setting not received, use Gage altimeter setting and increase all DAs 208 feet and MDAs 220 feet; increase LPV and LNAV/VNAV Cats A and B visibility ¼ mile and Circling Cat B visibility ¼ mile. Circling NA to Rwy's 4 and 22.

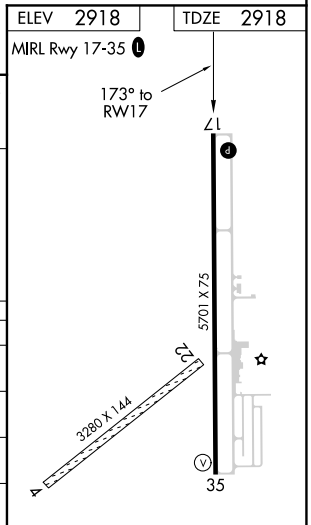
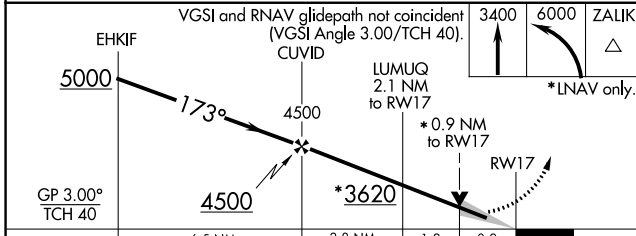
MISSED APPROACH: Climb to 3400 then climbing left turn to 6000 direct ZALIK and hold.

| | | |
|--------------------------|---|---------------------------------|
| AWOS-3 118.175 | KANSAS CITY CENTER 126.95 379.2 | UNICOM 122.8 (CTAF) 0 |
|--------------------------|---|---------------------------------|



SC-2, 07 OCT 2021 to 04 NOV 2021

SC-2, 07 OCT 2021 to 04 NOV 2021



| CATEGORY | A | B | C | D |
|--------------|-----------------------|-----------------------|---|----|
| LPV DA | 3168-7/8 | 250 (300-7/8) | | NA |
| LNAV/VNAV DA | 3168-7/8 | 250 (300-7/8) | | NA |
| LNAV MDA | 3240-1 | 322 (400-1) | | NA |
| CIRCLING | 3300-1 382 (400-1) | 3580-1 662 (700-1) | | NA |