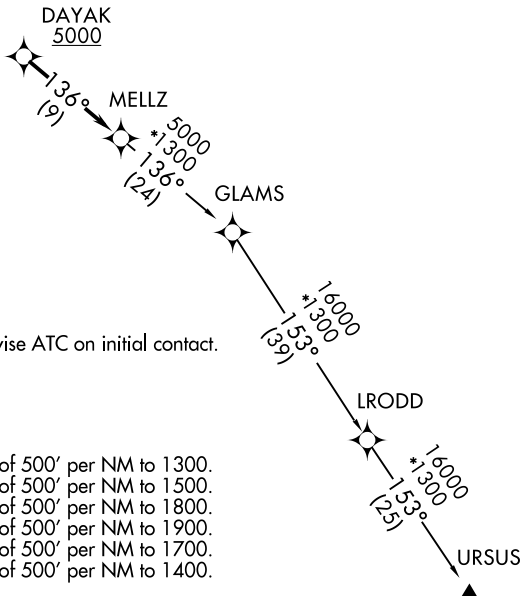
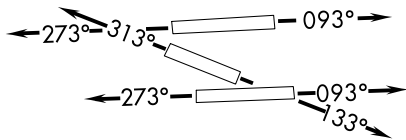


MELLZ ONE DEPARTURE (RNAV)

**TOP ALTITUDE:
ASSIGNED BY ATC**

ATIS
124.0
CLNC DEL
133.0
GND CON
121.7
TAMiami TOWER *
118.9 (CTAF)
MIAMI DEP CON
125.5 354.1



NOTE: RNAV 1.
 NOTE: RADAR required..
 NOTE: DME/DME/IRU or GPS required.
 NOTE: If unable to accept climb rate, advise ATC on initial contact.

TAKEOFF MINIMUMS

- Rwy 9L: Standard with minimum climb of 500' per NM to 1300.
- Rwy 9R: Standard with minimum climb of 500' per NM to 1500.
- Rwy 13: Standard with minimum climb of 500' per NM to 1800.
- Rwy 27L: Standard with minimum climb of 500' per NM to 1900.
- Rwy 27R: Standard with minimum climb of 500' per NM to 1700.
- Rwy 31: Standard with minimum climb of 500' per NM to 1400.

NOTE: Chart not to scale.

DEPARTURE ROUTE DESCRIPTION

- TAKEOFF RUNWAYS 9L/R:** Climb on heading 093° or as assigned for RADAR vectors to cross DAYAK at or above 5000 thence....
- TAKEOFF RUNWAY 13:** Climb on heading 133° or as assigned for RADAR vectors to cross DAYAK at or above 5000 thence....
- TAKEOFF RUNWAYS 27L/R:** Climb on heading 273° or as assigned for RADAR vectors to cross DAYAK at or above 5000 thence....
- TAKEOFF RUNWAY 31:** Climb on heading 313° or as assigned for RADAR vectors to cross DAYAK at or above 5000 thence....

...on track 136° to MELLZ, then on assigned transition. Maintain ATC assigned altitude, expect clearance to filed altitude within 10 minutes after departure.

- GLAMS TRANSITION (MELLZ1.GLAMS)
- URSUS TRANSITION (MELLZ1.URSUS)

SE-3, 07 OCT 2021 to 04 NOV 2021

SE-3, 07 OCT 2021 to 04 NOV 2021