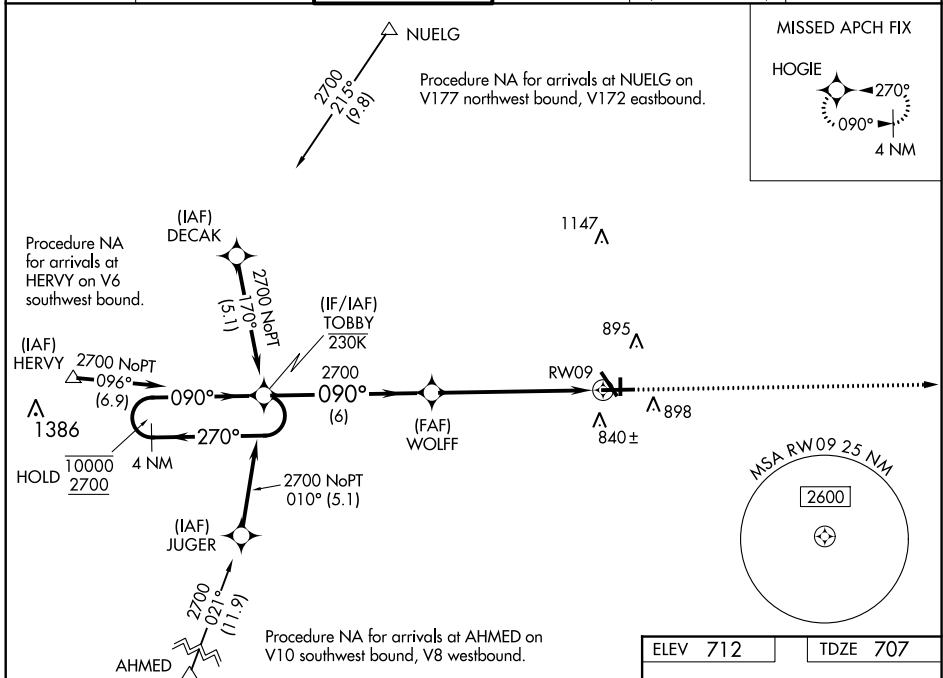


WAAS CH 45522 W09A	APP CRS 090°	Rwy Idg 6501 TDZE 707 Apt Elev 712
--	------------------------	---

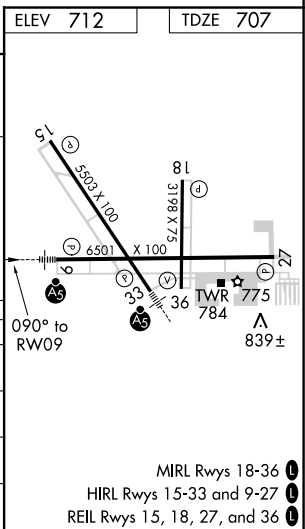
RNAV (GPS) RWY 9

AURORA MUNI (A.R.R.)

RNP APCH.				MALSR	MISSED APPROACH: Climb to 2500 direct HOGIE and hold.
▼ For uncompensated Baro-VNAV systems, LNAV/VNAV NA below -20°C or above 54°C. For inop ALS, increase LNAV Cat C/D visibility to 1½ SM.					
ATIS 125.85	CHICAGO APP CON 133.5 349.0	AURORA TOWER* 120.6 (CTAF) 0	GND CON 121.7	CLNC DEL 121.7 (When tower closed)	UNICOM 122.95 123.5



4 NM Holding Pattern		TOBBY	WOLFF	2500 HOGIE
GP 3.00° TCH 45		2700	2700	*LNAV only.
10000 ← 270°		← 090°	← 090°	*1.5 NM to RWY 09
2700 → 090°		→ 090°	→ 090°	
		6 NM	4.6 NM	1.5 NM
CATEGORY	A	B	C	D
LPV DA		957-½	250 (300-½)	
LNAV/VNAV DA		1035-½	328 (400-½)	
LNAV MDA	1220-½	513 (600-½)	1220-1	513 (600-1)
C CIRCLING	1220-1	508 (600-1)	1220-1½ 508 (600-1½)	1320-2 608 (700-2)



EC-3, 07 OCT 2021 to 04 NOV 2021

EC-3, 07 OCT 2021 to 04 NOV 2021