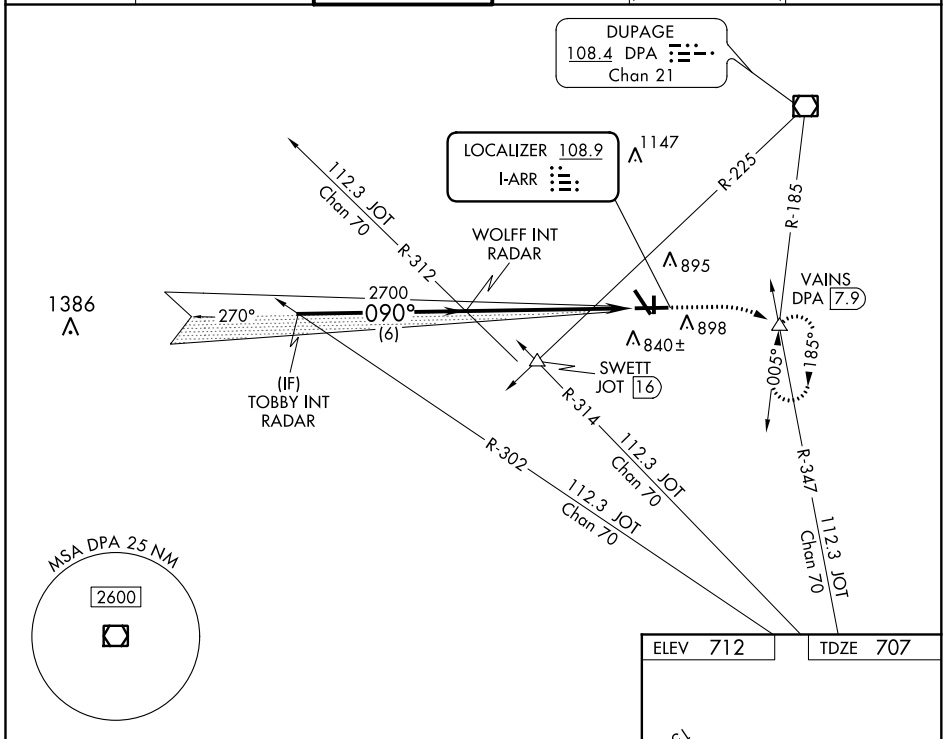


LOC I-ARR 108.9	APP CRS 090°	Rwy Idg TDZE Apt Elev	6501 707 712
---------------------------	------------------------	-----------------------------	---

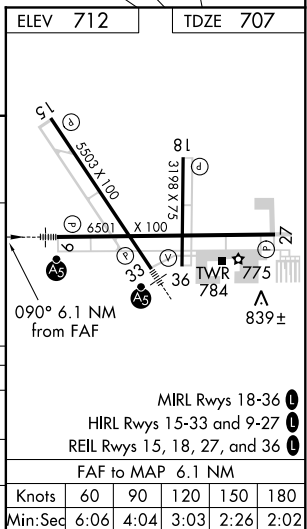
ILS or LOC RWY 9

AURORA MUNI (A.R.R.)

RADAR required for procedure entry.		MALS R	MISSED APPROACH: Climb to 1200 then climbing right turn to 3000 on heading 090° and on DPA VOR/DME R-185 to VAINS INT/DPA 7.9 DME and hold, continue climb-in-hold to 3000.	
▼ For inop ALS, increase S-LOC 9 Cat C/D visibilities to 1½ SM.		AS		
ATIS 125.85	CHICAGO APP CON 133.5 349.0	AURORA TOWER ★ 120.6 (CTAF)	GND CON 121.7	CLNC DEL 121.7 (When tower closed)
			UNICOM 122.95 123.5	



	TOBBY INT RADAR	WOLFF INT RADAR	1200	3000	VAINS
		2700	↑	hdg 090°	△
	2700	2700		DPA R-185	
	GS 3.00° TCH 45				
	6 NM		6.1 NM		
CATEGORY	A	B	C	D	
S-ILS 9	907-½ 200 (200-½)				
S-LOC 9	1220-½ 513 (600-½)		1220-1 513 (600-1)		
CIRCLING	1220-1 508 (600-1)		1220-1½ 508 (600-1½)		1320-2 608 (700-2)



EC-3, 07 OCT 2021 to 04 NOV 2021

EC-3, 07 OCT 2021 to 04 NOV 2021