

WAAS CH <b>86227</b> <b>W24A</b>	APP CRS <b>238°</b>	Rwy Idg TDZE Apt Elev	<b>6201</b> <b>2087</b> <b>2105</b>
--	------------------------	-----------------------------	---

# RNAV (GPS) RWY 24

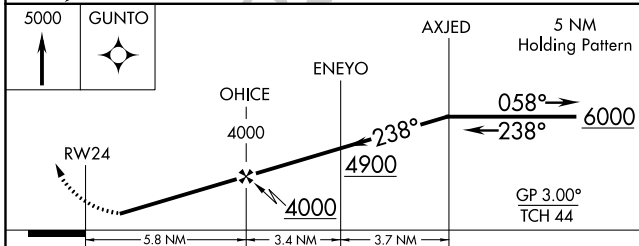
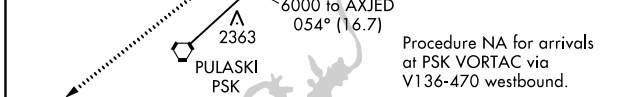
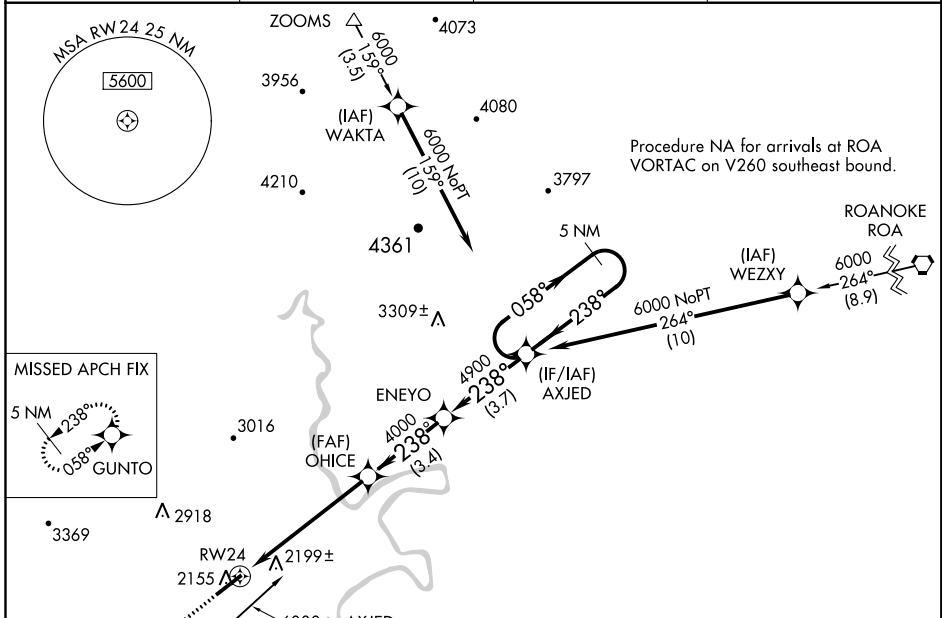
NEW RIVER VALLEY (PSK)

RNP APCH.

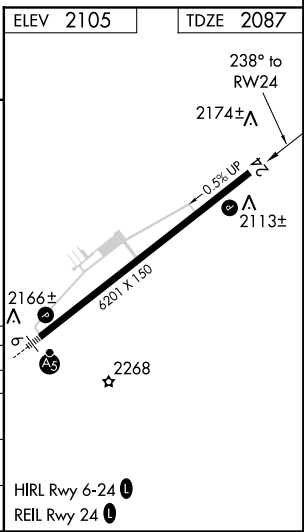
▼ Baro-VNAV NA when using Blacksburg altimeter setting. For uncompensated Baro-VNAV systems, LNAV/VNAV NA below -19°C or above 45°C. When local altimeter setting not received, use Blacksburg altimeter setting and increase all DA 36 feet, and all MDA 40 feet; increase LNAV/VNAV all Cats and LNAV Cat C visibility ¼ SM.

⚠ MISSED APPROACH: Climb to 5000 direct GUNTO and hold.

AWOS-3 <b>127.375</b>	ROANOKE APP CON <b>126.0 339.8</b>	ROANOKE CLNC DEL <b>121.7</b>	UNICOM <b>122.7 (CTAF) 0</b>
--------------------------	---------------------------------------	----------------------------------	---------------------------------



CATEGORY	A	B	C	D
LPV DA	2337-1 250 (300-1)			
LNAV/VNAV DA	2502-1½ 415 (400-1½)			
LNAV MDA	2460-1 373 (400-1)		2460-1¼ 373 (400-1¼)	
CIRCLING	2620-1 515 (600-1)		2620-1½ 2680-2 575 (600-2)	



NE-3, 07 OCT 2021 to 04 NOV 2021

NE-3, 07 OCT 2021 to 04 NOV 2021