

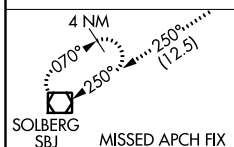
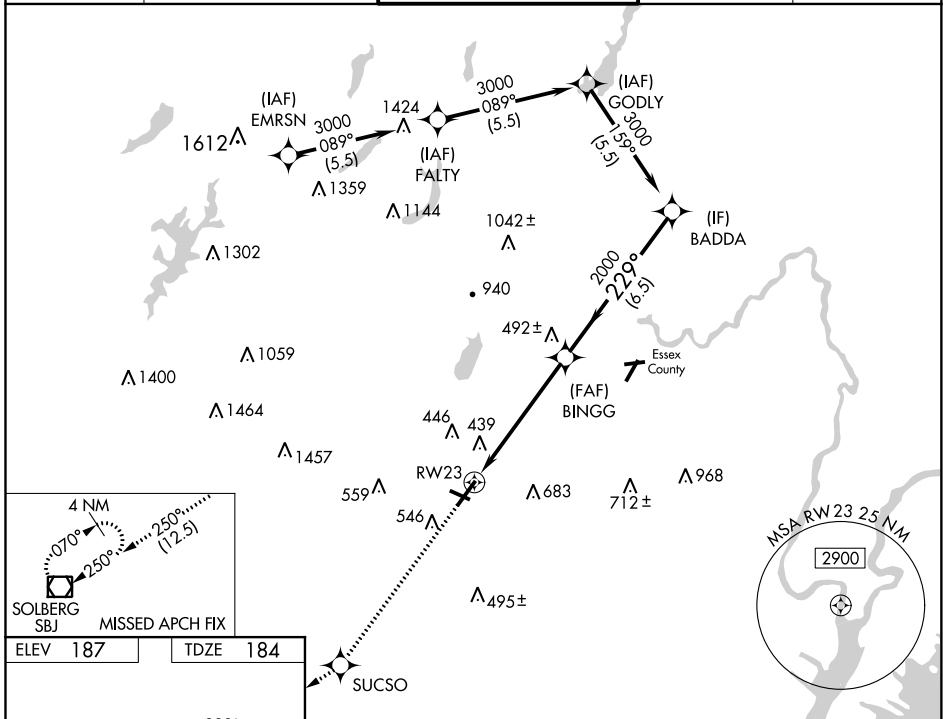
WAAS CH 45621 W23A	APP CRS 229°	Rwy Idg TDZE 184 Apt Elev 187	5998
--	------------------------	---	-------------

RNAV (GPS) Z RWY 23

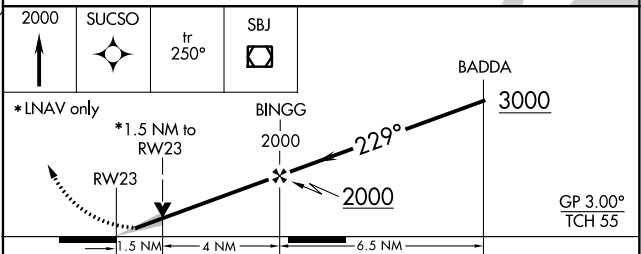
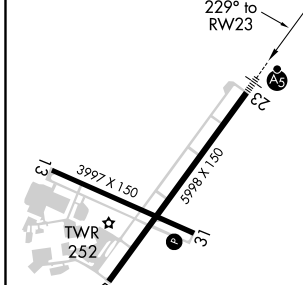
MORRISTOWN MUNI (MMU)

RNP APCH.	MALSR	MISSED APPROACH:
<p>⚠ Circling to Rwy 13, 31 NA at night. For uncompensated Baro-VNAV systems, LNAV/VNAV NA below -15°C or above 54°C. For inop ALS, increase LNAV/VNAV all Cats visibility to 1½ SM and LNAV Cats C/D visibility to 1¾ SM.</p>		<p>Climb to 2000 direct SUSCO then on track 250° to SBJ VOR/DME and hold.</p>

ATIS 124.25	NEW YORK APP CON 127.6 379.9	MORRISTOWN TOWER * 118.1 (CTAF) 353.9	GND CON 134.2	CLNC DEL 128.6
-----------------------	--	--	-------------------------	--------------------------



ELEV 187	TDZE 184
----------	----------



CATEGORY	A	B	C	D
LPV DA		384-1/2	200 (200-1/2)	
LNAV/VNAV DA		749-1 1/4	565 (600-1 1/4)	
LNAV MDA	700- 1/2	516 (600- 1/2)	700-1	516 (600-1)
CIRCLING	860-1	900-1	1000-2 1/2	1200-3
	673 (700-1)	713 (800-1)	813 (900-2 1/2)	1013 (1100-3)

REIL Rwys 5 and 31
HIRL Rwy 5-23
MIRL Rwy 13-31

NE-2, 07 OCT 2021 to 04 NOV 2021

NE-2, 07 OCT 2021 to 04 NOV 2021