

| | | |
|-------------|----------|-------------|
| APP CRS | Rwy ldg | 5998 |
| 229° | TDZE | 183 |
| | Apt Elev | 187 |

RNAV (RNP) Y RWY 23

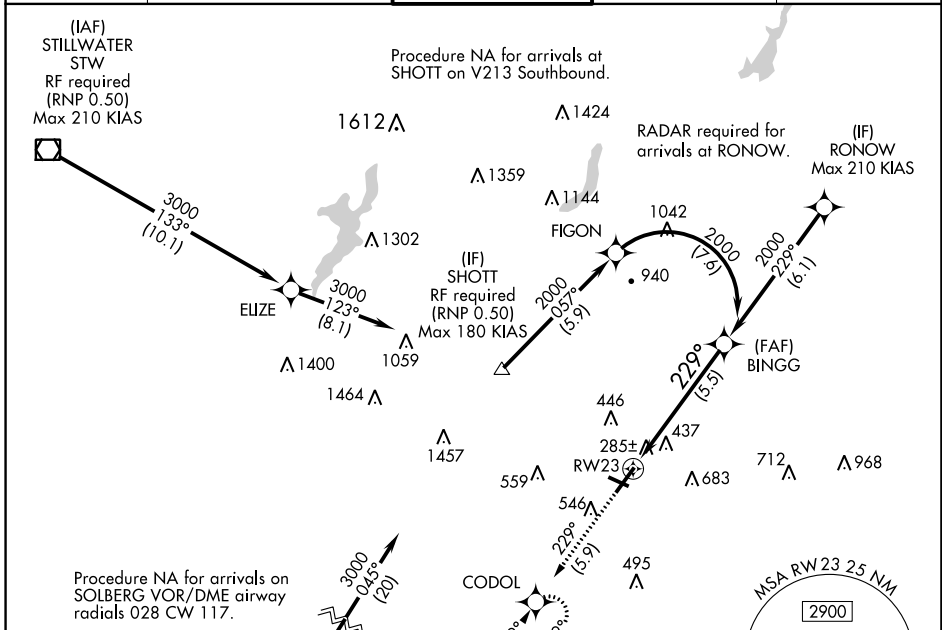
MORRISTOWN MUNI (MMU)

For uncompensated Baro-VNAV systems, procedure NA below -15°C (5°F) or above 48°C (118°F). When local altimeter setting not received, procedure NA. GPS required. For inoperative MALSR, increase RNP 0.11 all Cats visibility to 1¼ mile and RNP 0.30 all Cats visibility to 2 miles. Visibility reduction by helicopters NA.



MISSED APPROACH: Climb to 2000 on track 229° to CODOL and hold.

| | | | | |
|-----------------------|--|--|-------------------------|--------------------------|
| ATIS 124.25 | NEW YORK APP CON 127.6 379.9 | MORRISTOWN TOWER* 118.1 (CTAF) 353.9 | GND CON 134.2 | CLNC DEL 128.6 |
|-----------------------|--|--|-------------------------|--------------------------|

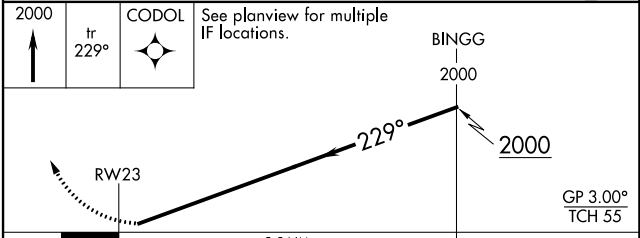
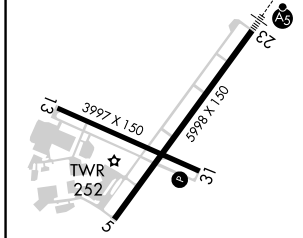


NE-2, 07 OCT 2021 to 04 NOV 2021

NE-2, 07 OCT 2021 to 04 NOV 2021

| | |
|----------|----------|
| ELEV 187 | TDZE 183 |
|----------|----------|

(IAF) SOLBERG SBJ
RF required (RNP 0.50)
Max 210 KIAS



| | | | | |
|-------------|---|--------|--------------|---|
| CATEGORY | A | B | C | D |
| RNP 0.11 DA | | 553-¾ | 370 (400-¾) | |
| RNP 0.30 DA | | 788-1½ | 605 (700-1½) | |

AUTHORIZATION REQUIRED