

VOR/DME PVW <b>112.9</b> Chan <b>76</b>	APP CRS <b>024°</b>	Rwy Idg <b>5997</b> TDZE <b>3374</b> Apt Elev <b>3374</b>
---	------------------------	---

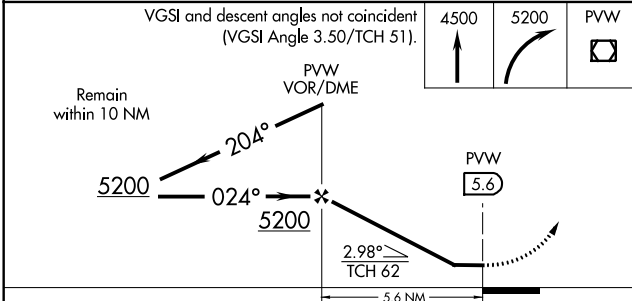
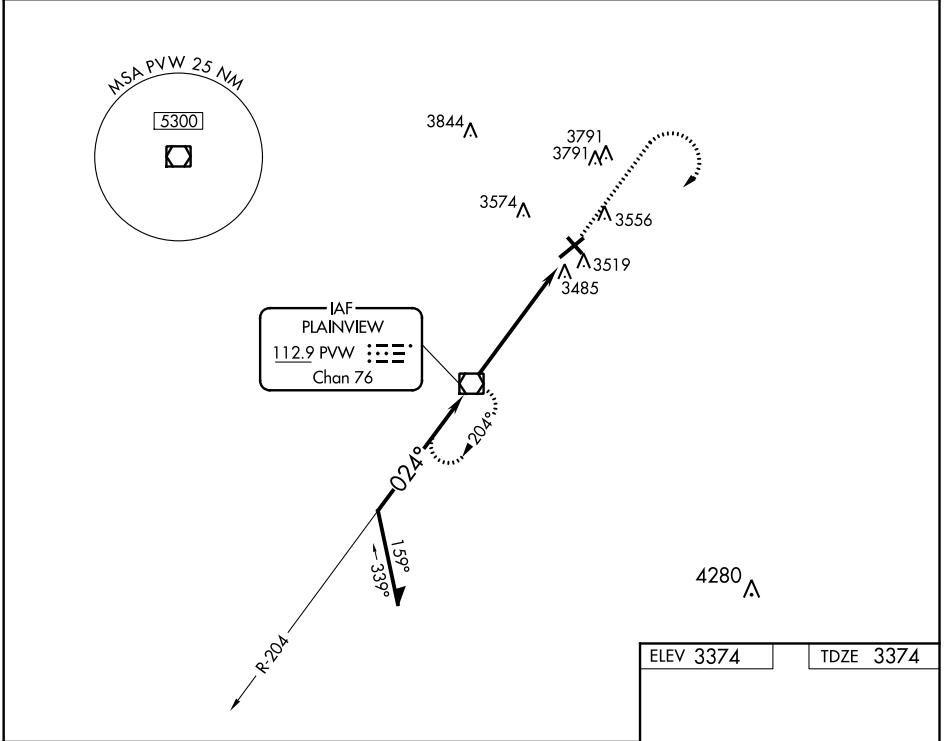
# VOR RWY 4

HALE COUNTY (PVW)

**NA** When local altimeter setting not received, use Lubbock altimeter setting and increase all MDA 100 feet, increase S-4 visibility Cat C/D to 1½ SM, Circling Cat C visibility to 2¾ SM, and Circling Cat D visibility to 3 SM. Helicopter visibility reduction below ¾ mile NA.

MISSED APPROACH: Climb to 4500, then climbing right turn to 5200 direct PVW VOR/DME and hold.

AWOS-3 <b>119.675</b>	LUBBOCK APP CON <b>119.2 351.8</b>	CLNC DEL <b>121.7</b>	UNICOM <b>123.0 (CTAF)</b>
--------------------------	---------------------------------------	--------------------------	-------------------------------



ELEV 3374	TDZE 3374
-----------	-----------

The diagram shows the runway layout for RWY 4, with dimensions of 5997 x 100 feet and 4000 x 100 feet. A star symbol indicates the location of RWY 4-22 and RWY 13-31. The diagram also shows the Final Approach Fix (FAF) located 024° 5.6 NM from the runway. A table below provides speed and time data for different wind conditions.

REIL Rws 4 and 22 LURL Rws 4-22 and 13-31	FAF to MAP 5.6 NM
Knots	60 90 120 150 180
Min:Sec	5:36 3:44 2:48 2:14 1:52

CATEGORY	A	B	C	D
S-4	3840-1 466 (500-1)		3840-1¾ 466 (500-1¾)	
CIRCLING	3940-1 566 (600-1)		4160-2¼ 786 (800-2¼)	4160-2½ 786 (800-2½)

SC-2, 07 OCT 2021 to 04 NOV 2021

SC-2, 07 OCT 2021 to 04 NOV 2021