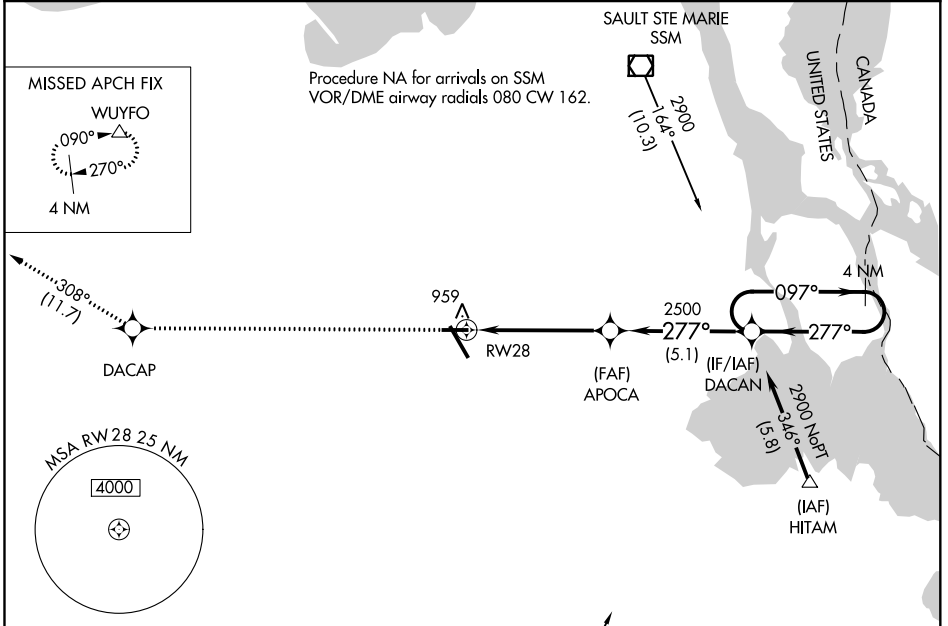


# RNAV (GPS) RWY 28

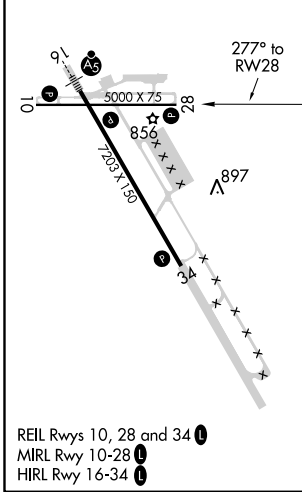
CHIPPEWA COUNTY INTL (CIU)

APP CRS <b>277°</b>	Rwy Idg TDZE Apt Elev	<b>5000</b> <b>799</b> <b>799</b>
------------------------	-----------------------------	---

RNP APCH.	TORONTO CENTER <b>132.65 344.5</b>	UNICOM <b>123.0 (CTAF)</b>
<p><b>⚠</b> Rwy 28 helicopter visibility reduction below 1 SM NA. When local altimeter setting not received, use Sault Ste Marie Muni/Sanderson Field altimeter setting; increase all MDA 60 feet, increase LNAV and Circling visibility Cat C/D ¼ SM. Straight-in and Circling Rwy 28 NA at night.</p>		<p>MISSED APPROACH: Climb to 3000 direct DACAP and track 308° to WUYFO and hold.</p>



ELEV 799	<b>D</b>	TDZE 799
----------	----------	----------



3000	DACAP	ir 308°	WUYFO	DACAN	4 NM Holding Pattern
RW28		APOCA	2500	097°	2900
3.05° TCH 40					
-5.1 NM		-5.1 NM			
CATEGORY	A	B	C	D	
LNAV MDA	1220-1	421 (500-1)	1220-1½	421 (500-1½)	
<b>C</b> CIRCLING	1260-1	461 (500-1)	1260-1½	1360-2	561 (600-2)

EC-1, 07 OCT 2021 to 04 NOV 2021

EC-1, 07 OCT 2021 to 04 NOV 2021