

MARYSVILLE, CALIFORNIA

# ILS or LOC Y RWY 33

LOC I-MIZ <b>109.5</b>	APCH CRS <b>325°</b>	Rwy ldg 12,001	TDZE 105	Arprt Elev 113
---------------------------	-------------------------	-------------------	-------------	-------------------

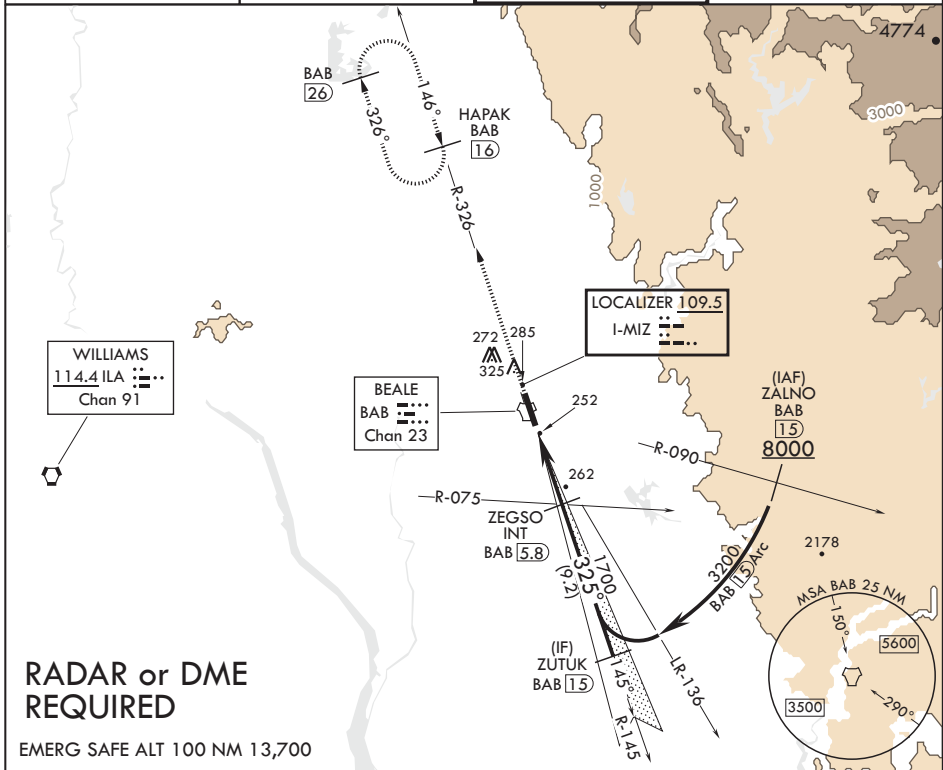
AL-771 (USAF)

BEALE AFB (KBAB)

**⚠** \* When ALS inop, increase RVR to 40 and vis to 3/4 mile.  
 \*\* When ALS inop, increase CAT AB RVR to 55 and vis to 1 mile, CAT CDE RVR to 60 and vis to 1 1/8 miles.  
 \*\*\* Circling not authorized E of Rwy 15-33.

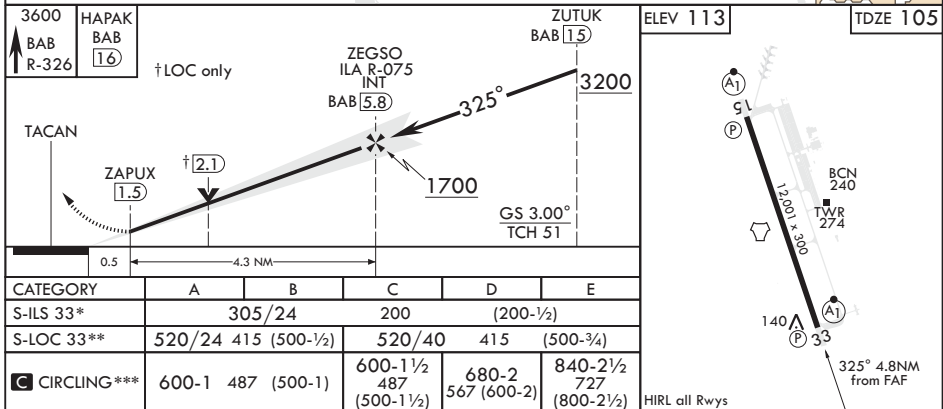
**ALSF-1** MISSED APPROACH: Climb to 3600 intercept BAB TACAN R-326 to HAPAK and hold.

ATIS* <b>124.55 273.5</b>	NORCAL APP CON <b>125.4 259.1</b>	TOWER* <b>119.4 284.75</b>	GND CON <b>121.6 257.75</b>
------------------------------	--------------------------------------	-------------------------------	--------------------------------



## RADAR or DME REQUIRED

EMERG SAFE ALT 100 NM 13,700



MARYSVILLE, CALIFORNIA

39°08'N - 121°26'W

BEALE AFB (KBAB)

Amdt 5 20JUL17

# ILS or LOC Y RWY 33

SW-2, 07 OCT 2021 to 04 NOV 2021

SW-2, 07 OCT 2021 to 04 NOV 2021