

WAAS CH 82202 W15A	APP CRS 155°	Rwy ldg 6224 TDZE 643 Apt Elev 645
--	------------------------	---

RNAV (GPS) RWY 15

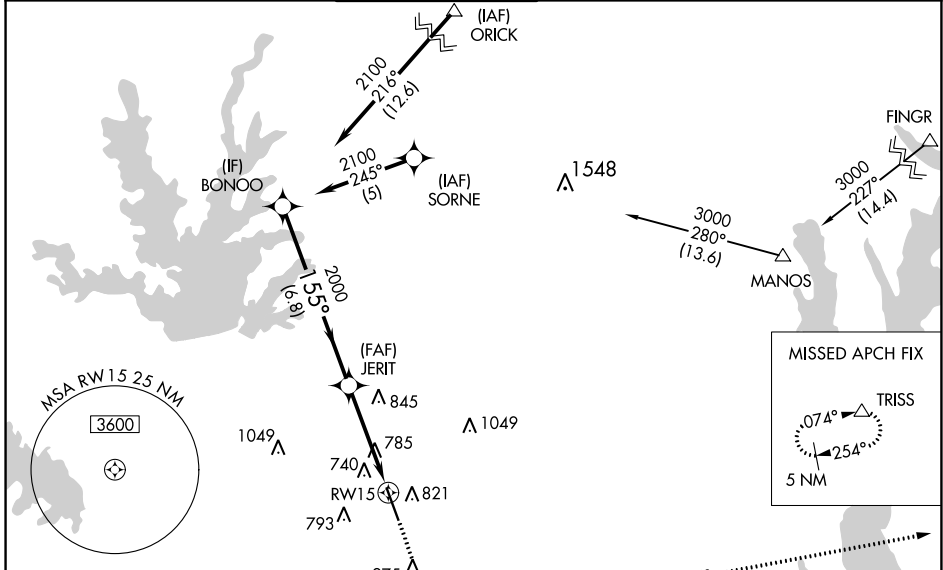
ADDISON (ADS)

▼ When local altimeter setting not received, use Dallas Love Fld altimeter setting and increase all DA 39 feet and MDA 40 feet, increase LNAV/VNAV all Cats visibility and Circling Cat C visibility 1/4 SM. Inoperative table does not apply to LPV all Cats and LNAV Cats A/B. Baro-VNAV NA when using Dallas Love Fld altimeter setting. For uncompensated Baro-VNAV systems, LNAV/VNAV NA below -16°C (4°F) or above 47°C (117°F). DME/DME RNP-0.3 NA. Helicopter visibility reduction below 1 SM NA. For inoperative MALSR increase LNAV Cat C visibility to 1 1/4.

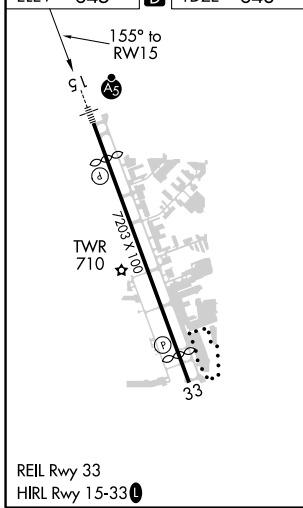
MALSR

MISSED APPROACH:
Climb to 3000 direct VEYXE and via 074° track to TRISS and hold.

ATIS 133.4	REGIONAL APP CON 124.3 282.275	ADDISON TOWER ★ 126.0 (CTAF) 239.0	GND CON 121.6	CLNC DEL 119.55	UNICOM 122.95
----------------------	--	--	-------------------------	---------------------------	-------------------------



ELEV	645	D	TDZE	643
------	------------	----------	------	------------



Procedure Turn NA

BONOO 2100 → 155° → JERIT → 2000 → RWY 15

3000 ↑ VEYXE ↗ TRISS △

GP 3.00° TCH 52

6.8 NM | 4.1 NM

CATEGORY	A	B	C	D
LPV DA	943-1 300 (300-1)			
LNAV/VNAV DA	1076-1 433 (500-1)			
LNAV MDA	1100-1 457 (500-1)			
C CIRCLING	1200-1 555 (600-1)	1280-1 3/4 635 (700-1 3/4)	1400-2 1/2 755 (800-2 1/2)	

SC-2, 07 OCT 2021 to 04 NOV 2021

SC-2, 07 OCT 2021 to 04 NOV 2021