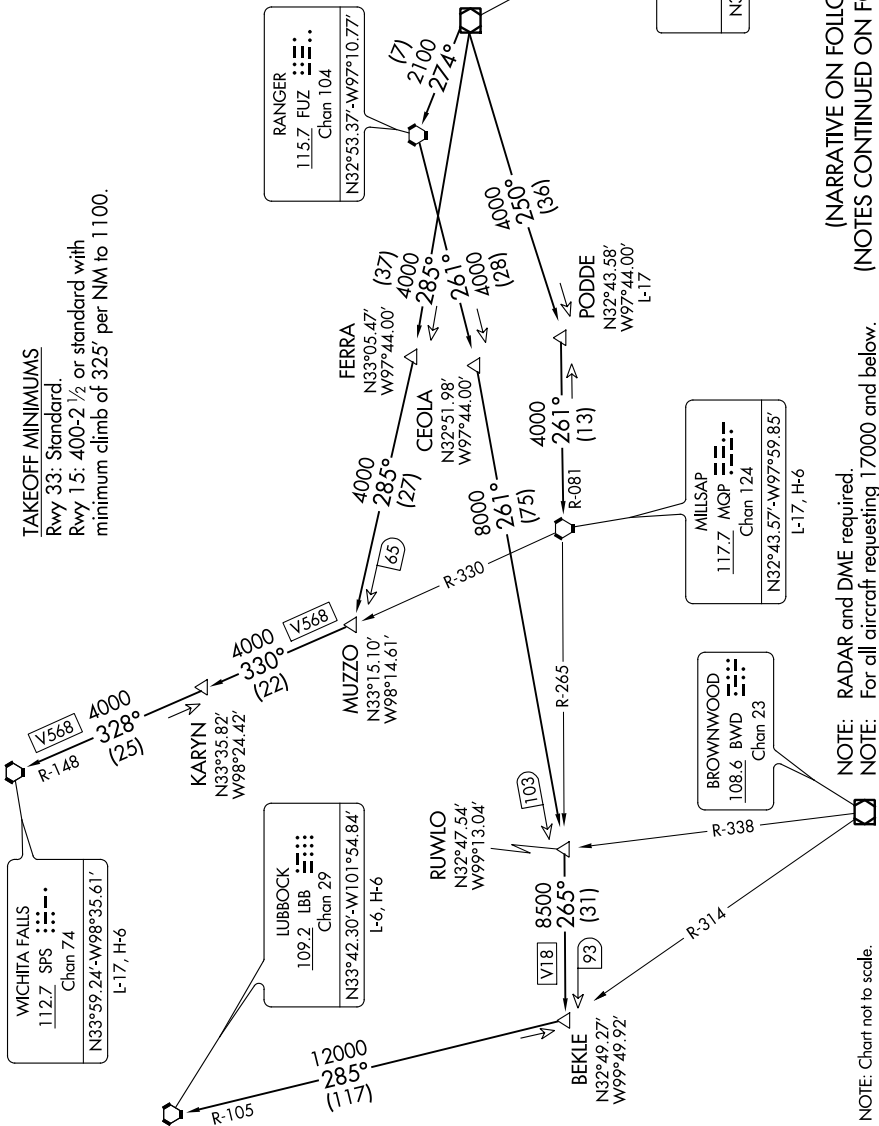


KINGDOM NINE DEPARTURE

ATIS 133.4
 CUNCDL 119.55
 GND CON 121.6
 ADDISON TOWER ★
 126.0 (CTAF) 239.0
 REGIONAL DEP CON
 124.3 282.275



TAKEOFF MINIMUMS
 Rwy 33: Standard.
 Rwy 15: 400-2 1/2 or standard with
 minimum climb of 325' per NM to 1100.



(NARRATIVE ON FOLLOWING PAGE)
 (NOTES CONTINUED ON FOLLOWING PAGE)

NOTE: RADAR and DME required.
 NOTE: For all aircraft requesting 17000 and below.

NOTE: Chart not to scale.

SC-2, 07 OCT 2021 to 04 NOV 2021

SC-2, 07 OCT 2021 to 04 NOV 2021

KINGDOM NINE DEPARTURE