

WAAS CH <b>70623</b> <b>W12A</b>	APP CRS <b>126°</b>	Rwy Idg <b>7959</b>
		TDZE <b>597</b>
		Apt Elev <b>597</b>

# RNAV (GPS) Y RWY 12

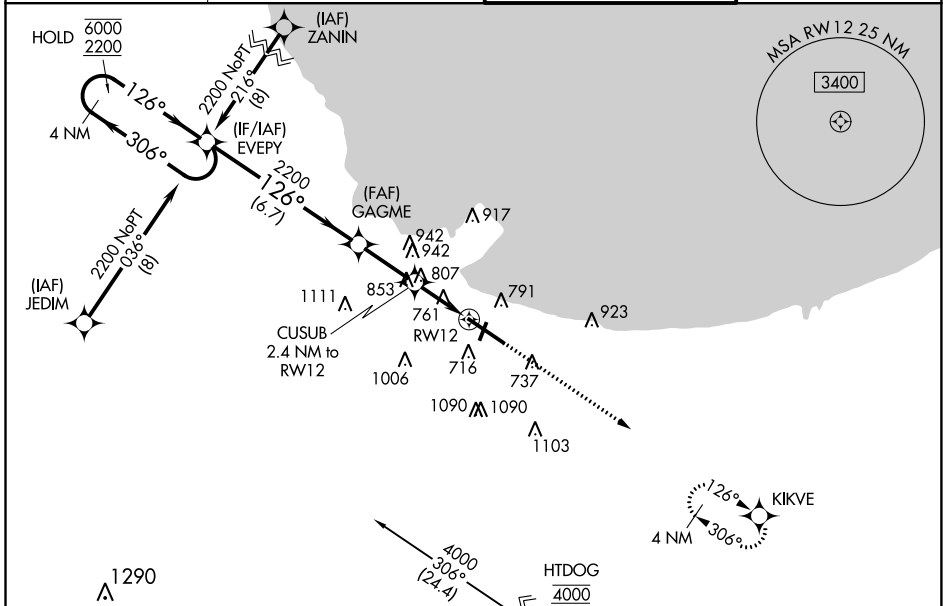
GARY/CHICAGO INTL (GYY)

RNP APCH - GPS.

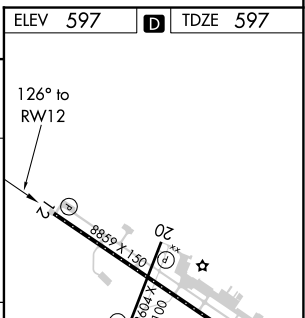
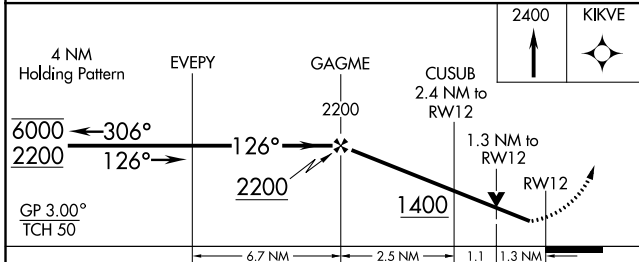
**⚠** For uncompensated Baro-VNAV systems, LNAV/VNAV NA below -16°C or above 54°C. Rwy 12 helicopter visibility reduction below 3/4 SM NA.

MISSED APPROACH: Climb to 2400 direct KIKVE and hold.

ATIS <b>134.575</b>	CHICAGO APP CON <b>133.1 285.6</b>	GARY TOWER ★ <b>125.6 (CTAF) 0</b>	GND CON <b>121.9</b>
------------------------	---------------------------------------	---------------------------------------	-------------------------



ELEV 597	<b>D</b> TDZE 597
----------	-------------------



CATEGORY	A	B	C	D
LPV DA		797-3/4	200 (200-3/4)	
LNAV/VNAV DA		1049-13/8	452 (500-13/8)	
LNAV MDA	1060-1	463 (500-1)	1060-13/8	463 (500-13/8)
<b>C</b> CIRCLING	1160-1 563 (600-1)	1180-1 583 (600-1)	1400-23/4 803 (900-23/4)	1420-23/4 823 (900-23/4)

REIL Rwy 2, 12 and 20 **0**  
 HIRL Rwy 12-30 **0**  
 MIRL Rwy 2-20 **0**

EC-2, 07 OCT 2021 to 04 NOV 2021

EC-2, 07 OCT 2021 to 04 NOV 2021