

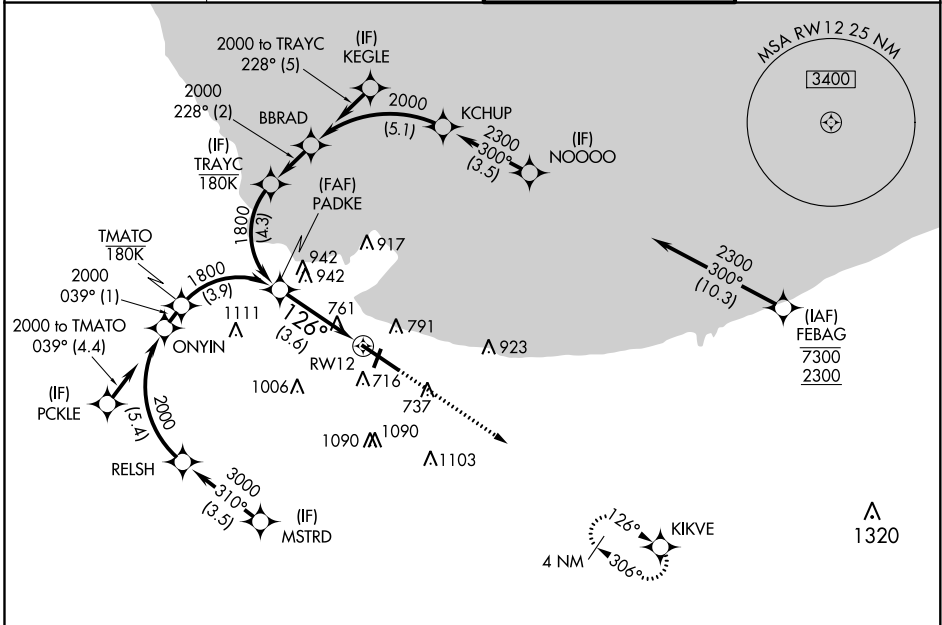
APP CRS	Rwy ldg	7959
126°	TDZE	597
	Apt Elev	597

RNAV (RNP) Z RWY 12

GARY/CHICAGO INTL (GYY)

RNP AR APCH - GPS.	For uncompensated Baro-VNAV systems, procedure NA below -16°C or above 54°C.	MISSED APPROACH: Climb to 2400 direct KIKVE and hold.
--------------------	--	---

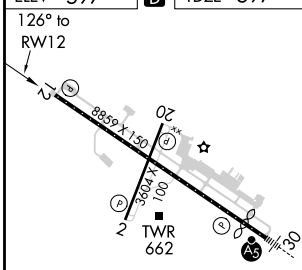
ATIS 134.575	CHICAGO APP CON 133.1 285.6	GARY TOWER ★ 125.6 (CTAF) 0	GND CON 121.9
------------------------	---------------------------------------	---------------------------------------	-------------------------



EC-2, 07 OCT 2021 to 04 NOV 2021

EC-2, 07 OCT 2021 to 04 NOV 2021

ELEV 597	D	TDZE 597
----------	----------	----------



- REIL Rwy 2, 12 and 20 0
- HIRL Rwy 12-30 0
- MIRL Rwy 2-20 0

VGSi and RNAV glidepath not coincident (VGSi angle 3.00/TCH 50).				2400	KIKVE
See planview for multiple IF locations.					
GP 3.00°	1800	126°	3.6 NM		
TCH 60					
CATEGORY	A	B	C	D	
RNP 0.10 DA		913-7/8	316 (400-7/8)		
RNP 0.30 DA		1043-1 3/8	446 (500-1 3/8)		

AUTHORIZATION REQUIRED