

BHHIA ONE ARRIVAL(RNAV) Transition Routes

FORT LAUDERDALE, FLORIDA

MIAMI APP CON
 120.5 350.225
 FLL D-ATIS
 135.0
 FXE ATIS
 119.85
 OPF ATIS
 125.9
 PMP ATIS
 120.55

RNAV 1-DME/DME/IRU or GPS.
 CANOA TRANSITION, RNP 1-GPS.
 MAXIM TRANSITION, RNP 1-GPS.
 IKBIX TRANSITION, RNP 1-GPS.
 RADAR required.

See following page for Arrival Routes.

BHHIA
7000
 KERRA
7000

CANOA TRANSITION (CANOA.BHHIA1)
FILCH TRANSITION (FILCH.BHHIA1)
HULKY TRANSITION (HULKY.BHHIA1)
IKBIX TRANSITION (IKBIX.BHHIA1)
MAXIM TRANSITION (MAXIM.BHHIA1)
PYREX TRANSITION (PYREX.BHHIA1)

NOTE: Expect "descend via" clearance and landing direction (east or west) by ARTCC. For vertical navigation planning, FLL landing east, select Rwy 10R, FLL landing west, select Rwy 28R.

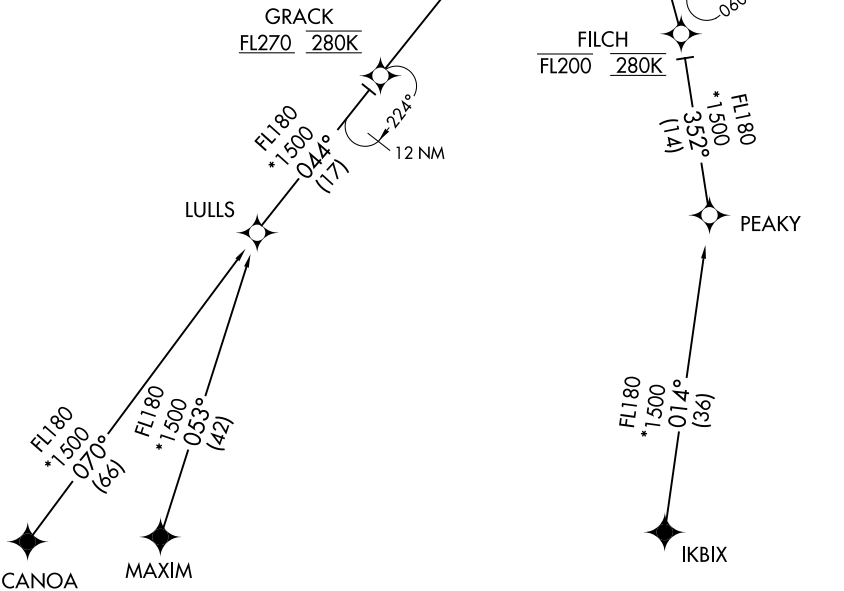
NOTE: MIA approach will issue landing runway.

NOTE: Descend via MACH number until intercepting 280K. Maintain 280K until slowed by the STAR or assigned by ATC.

NOTE: FILCH and HULKY TRANSITIONS, ATC assigned only.

NOTE: PYREX TRANSITION, for EYW area airports only.

NOTE: Jet aircraft only.



(CONTINUED ON FOLLOWING PAGE)

NOTE: Chart not to scale.

SE-3, 07 OCT 2021 to 04 NOV 2021

SE-3, 07 OCT 2021 to 04 NOV 2021