

LOC/DME I-TFM 110.15 Chan 038 (Y)	APP CRS 355°	Rwy Idg 6844 TDZE 1299 Apt Elev 1300
---	------------------------	---

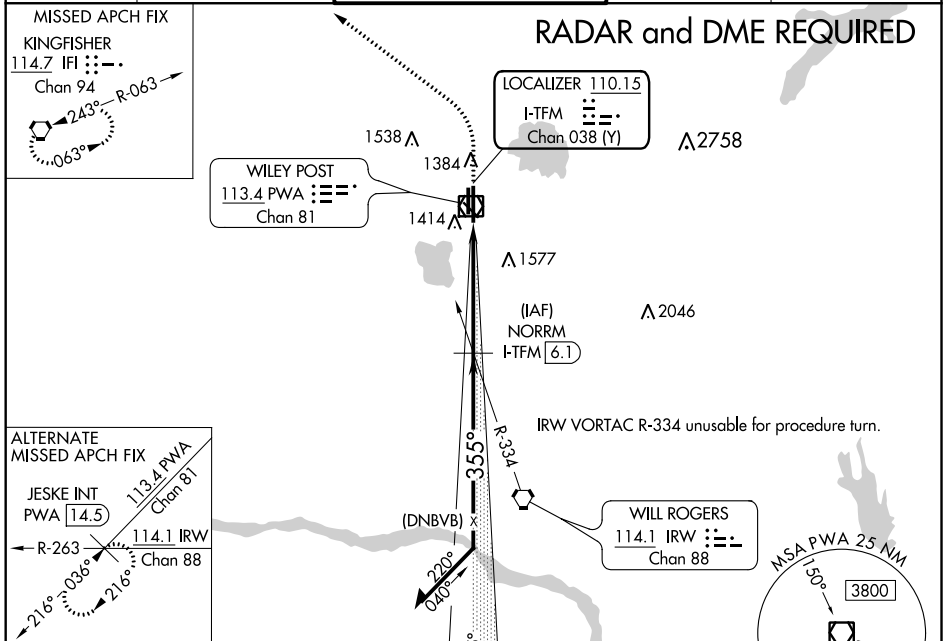
ILS or LOC RWY 35R

WILEY POST (PWA)

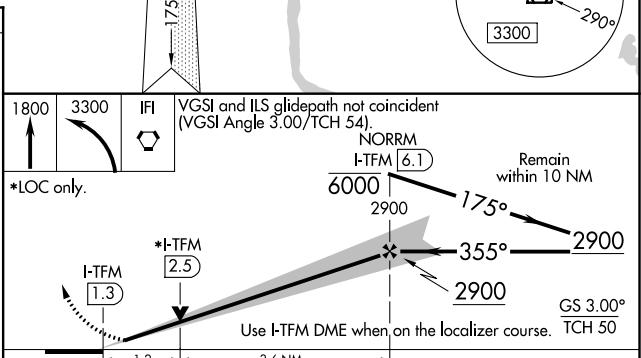
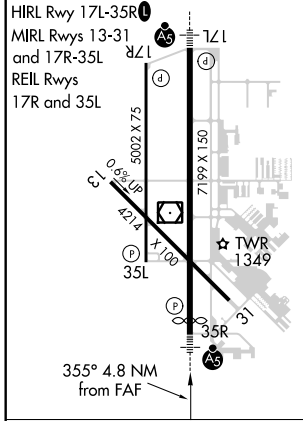
ASR When local altimeter setting not received, use Will Rogers World altimeter setting and increase all DA 21 feet and all MDA 40 feet. VDP NA with Will Rogers World altimeter setting.

MALSR MISSED APPROACH: Climb to 1800 then climbing left turn to 3300 direct IFI VORTAC and hold.

ATIS 128.725	OKE CITY APP CON 124.6 266.8	WILEY POST TOWER ★ 126.9 (CTAF) 306.9	GND CON 121.7	UNICOM 122.95
------------------------	--	---	-------------------------	-------------------------



ELEV 1300	TDZE 1299
-----------	-----------



CATEGORY	A	B	C	D
S-ILS 35R	1499-1/2		200 (200-1/2)	
S-LOC 35R	1740-1/2	441 (500-1/2)	1740-3/4 441 (500-3/4)	1740-1 441 (500-1)
CIRCLING	1780-1	480 (500-1)	1880-1/2 580 (600-1/2)	1880-2 580 (600-2)

SC-1, 07 OCT 2021 to 04 NOV 2021

SC-1, 07 OCT 2021 to 04 NOV 2021