

SW-2, 07 OCT 2021 to 04 NOV 2021

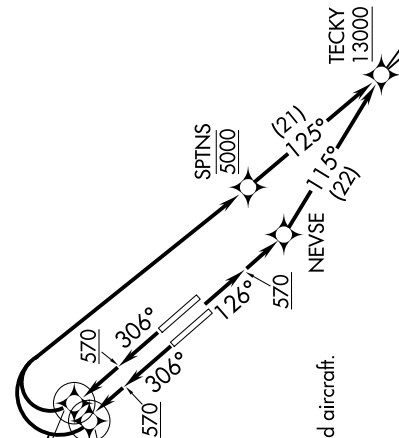
D-ATIS  
126.95  
CLINC DEL  
118.0  
CPDLC  
GND CON  
121.7  
SAN JOSE TOWER \*  
124.0 257.6  
NORCAL DEP CON  
121.3 270.35

MLPTS  
900 230K  
STCLR  
900 230K  
570  
306°  
570  
306°  
126°

TAKEOFF MINIMUMS

Rwys 12L/R: Standard with a minimum climb of 500' per NM to 570.

Rwys 30L/R: Standard with a minimum climb of 500' per NM to 700.



**TOP ALTITUDE:**  
FL190

NOTE: RNAV 1  
NOTE: RADAR required for non-GPS equipped aircraft.  
NOTE: DME/DME/IRU or GPS required.  
NOTE: Rwys 12L/R: LOSHN transition NA.

**DEPARTURE ROUTE DESCRIPTION**

**TAKEOFF RUNWAYS 12L, 12R:** Climb heading 126° to 570, then direct NEVSE, then on track 11.5° to cross TECKY at or above 13000, thence. . . .

**TAKEOFF RUNWAY 30L:** Climb heading 306° to 570, then direct to cross STCLR at or above 900 at or below 230K, then right turn direct to cross SPTNS at 5000, then on track 12.5° to cross TECKY at or above 13000, thence. . . .

**TAKEOFF RUNWAY 30R:** Climb heading 306° to 570, then direct to cross MLPTS at or above 900 at or below 230K, then right turn direct to cross SPTNS at 5000, then on track 12.5° to cross TECKY at or above 13000, thence. . . .

. . . on (transition), maintain FL190. Expect filed altitude 10 minutes after departure.

EBAYE TRANSITION (TECKY3.EBAYE)  
LOSHN TRANSITION (TECKY3.LOSHN)

NOTE: Chart not to scale.

SW-2, 07 OCT 2021 to 04 NOV 2021