

(SUNOL1.SUNOL) 20310  
**SUNOL ONE DEPARTURE**

NORMAN Y MINETA SAN JOSE INTL (SJC)  
 SAN JOSE, CALIFORNIA

AL-693 (FAA)

D-ATIS  
 126.95  
 CLNC DEL  
 118.0  
 CPDLC  
 GND CON  
 121.7  
 SAN JOSE TOWER\*  
 124.0 257.6  
 NORCAL DEP CON  
 121.3 270.35

SACRAMENTO  
 115.2 SAC  
 Chan 99  
 N38°26.62'-W121°33.10'  
 L-2-3, H-3

**TOP ALTITUDE:  
 ASSIGNED BY ATC**

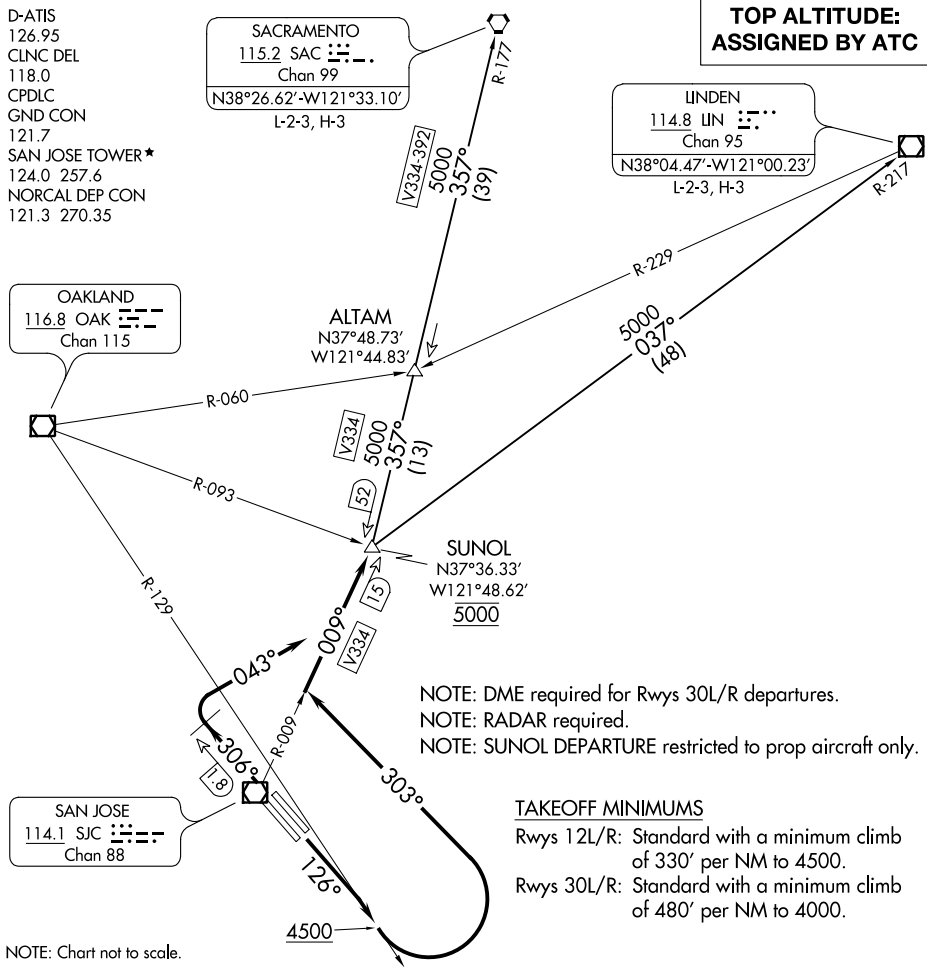
LINDEN  
 114.8 LIN  
 Chan 95  
 N38°04.47'-W121°00.23'  
 L-2-3, H-3

OAKLAND  
 116.8 OAK  
 Chan 115

ALTAM  
 N37°48.73'  
 W121°44.83'

SUNOL  
 N37°36.33'  
 W121°48.62'  
 5000

SAN JOSE  
 114.1 SJC  
 Chan 88



NOTE: DME required for Rwy 30L/R departures.  
 NOTE: RADAR required.  
 NOTE: SUNOL DEPARTURE restricted to prop aircraft only.

**TAKEOFF MINIMUMS**  
 Rwy 12L/R: Standard with a minimum climb of 330' per NM to 4500.  
 Rwy 30L/R: Standard with a minimum climb of 480' per NM to 4000.

NOTE: Chart not to scale.

**DEPARTURE ROUTE DESCRIPTION**

**TAKEOFF RUNWAYS 12L/R:** Climb heading 126° to intercept and proceed on OAK R-129 to 4500, then turn left heading 303° for RADAR vectors to intercept and proceed on SJC R-009 to cross SUNOL at 5000, thence . . . .

**TAKEOFF RUNWAYS 30L/R:** Climb heading 306° at SJC 1.8 DME northwest of SJC VOR/DME, turn right heading 043° to intercept and proceed on SJC R-009 to cross SUNOL at 5000, thence . . . .

. . . . then on (transition) or (assigned route). Maintain ATC assigned altitude.

**LINDEN TRANSITION (SUNOL1.LIN):** From over SUNOL on LIN R-217 to LIN VOR/DME.

**SACRAMENTO TRANSITION (SUNOL1.SAC):** From over SUNOL on SAC R-177 to SAC VORTAC.

**SUNOL ONE DEPARTURE**  
 (SUNOL1.SUNOL) 15AUG19

SAN JOSE, CALIFORNIA  
 NORMAN Y MINETA SAN JOSE INTL (SJC)

SW-2, 07 OCT 2021 to 04 NOV 2021

SW-2, 07 OCT 2021 to 04 NOV 2021