

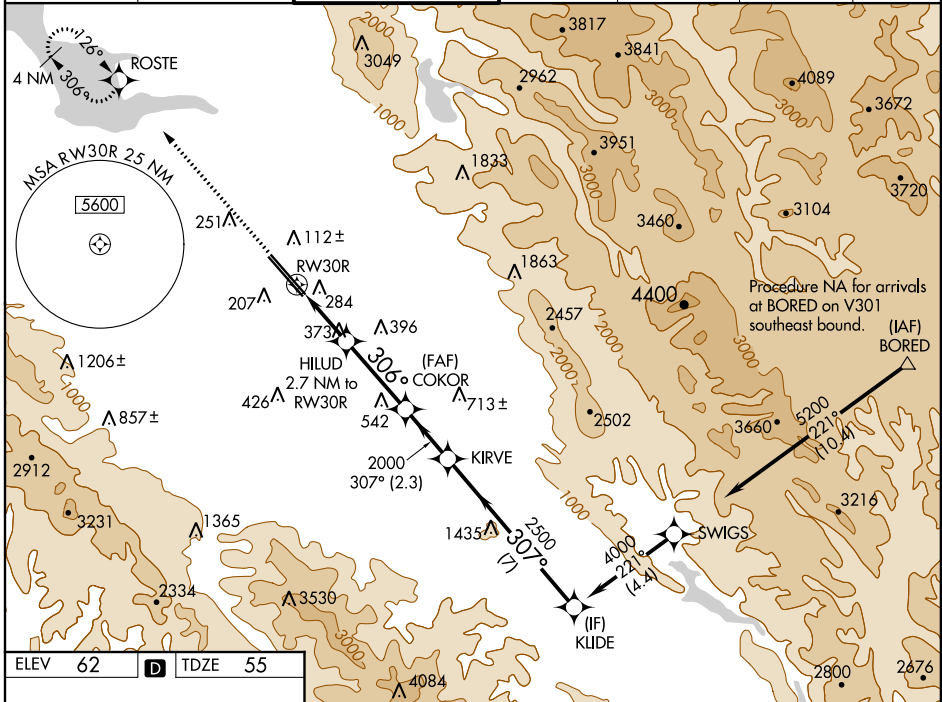
WAAS CH <b>72901</b> <b>W30B</b>	APP CRS <b>306°</b>	Rwy Idg <b>7597</b> TDZE <b>55</b> Apt Elev <b>62</b>
--	------------------------	---

# RNAV (GPS) Y RWY 30R

NORMAN Y MINETA SAN JOSE INTL (SJC)

<p><b>▼</b> For uncompensated Baro-VNAV systems, LNAV/VNAV NA below -1°C (31°F) or above 54°C (130°F). DME/DME RNP-0.3 NA.</p>					<p>MISSED APPROACH: Climb to 2300 direct ROSTE and hold.</p>		
--	--	--	--	--	--	--	--

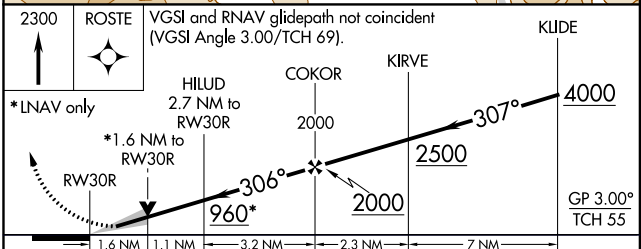
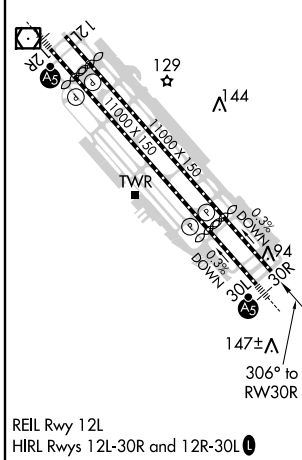
D-ATIS <b>126.95</b>	NORCAL APP CON <b>120.1 290.25</b>	SAN JOSE TOWER * <b>124.0 (CTAF) 0 257.6</b>	GND CON <b>121.7</b>	CLNC DEL <b>118.0</b>	CPDLC	UNICOM <b>122.95</b>
-------------------------	---------------------------------------	---	-------------------------	--------------------------	-------	-------------------------



SW-2, 07 OCT 2021 to 04 NOV 2021

SW-2, 07 OCT 2021 to 04 NOV 2021

ELEV 62	<b>D</b>	TDZE 55
---------	----------	---------



CATEGORY	A	B	C	D
LPV DA		255-3/4	200 (200-3/4)	
LNAV/VNAV DA		541-1-5/8	486 (500-1-1/2)	
LNAV MDA	640-1	585 (600-1)	640-1-3/4	585 (600-1-1/4)
<b>C</b> CIRCLING	640-1 578 (600-1)	700-1 638 (700-1)	700-1-3/4 638 (700-1-1/4)	700-2 638 (700-2)