

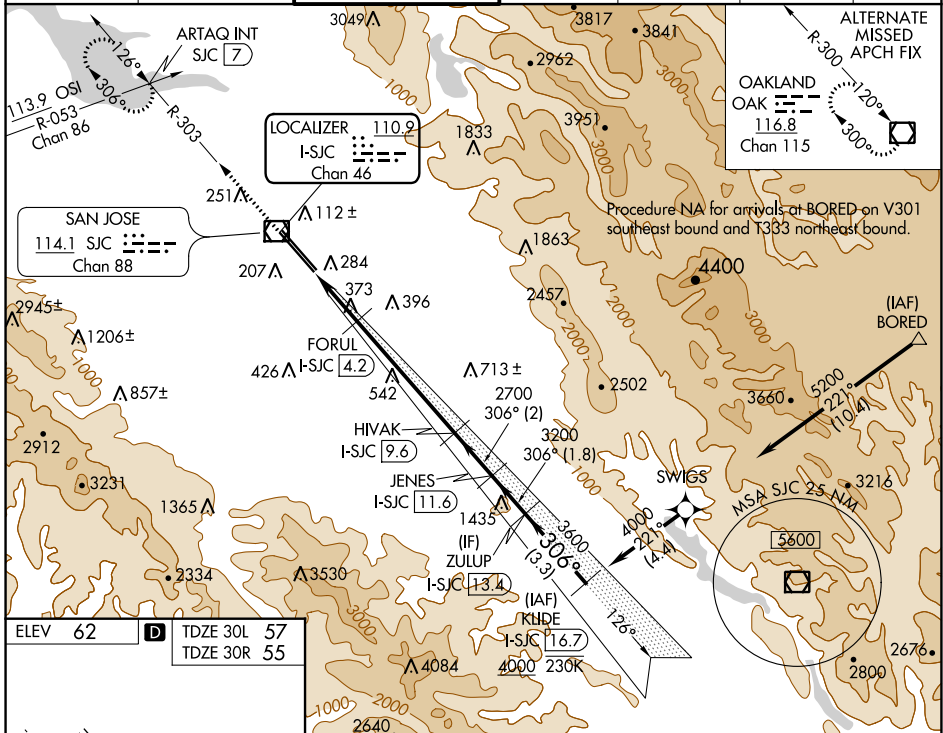
LOC/DME I-SJC 110.9 Chan 46	APP CRS 306°	Rwy Idg 7614 7597 TDZE 57 55 Apt Elev 62 62	30L 30R
------------------------------------------	------------------------	------------------------------------------------------	---------

ILS or LOC RWY 30L

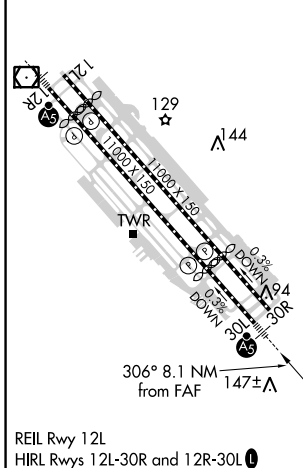
NORMAN Y MINETA SAN JOSE INTL (SJC)

RNAV 1-GPS or RADAR required for procedure entry. DME required. From BORED: RNAV 1-GPS required.		MALS Rwy 30L	MISSED APPROACH: Climb to 1900 on SJC VOR/DME R-303 to ARTAQ INT/SJC 7 DME and hold.
# RVR 1800 authorized with use of FD or AP or HUD to DA.			

D-ATIS 126.95	NORCAL APP CON 120.1 290.25	SAN JOSE TOWER * 124.0 (CTAF) 0 257.6	GND CON 121.7	CLNC DEL 118.0	CPDLC	UNICOM 122.95
-------------------------	---------------------------------------	-------------------------------------------------	-------------------------	--------------------------	-------	-------------------------



ELEV 62	TDZE 30L 57	TDZE 30R 55
---------	-------------	-------------



1900	ARTAQ INT	VGSI and ILS glidepath not coincident (VGSI Angle 3.00/TCH 70).		KLIDE I-SJC 16.7			
SJC R-303	FORUL I-SJC 4.2	HIAK I-SJC 9.6	ZULUP I-SJC 13.4	4000			
*LOC only	*I-SJC 3	JENES I-SJC 11.6	I-SJC 16.7				
I-SJC 1.4		2700	3200	3600			
		1000*	2700				
		1.6 NM	1.2 NM	5.3 NM	2 NM	1.8 NM	3.3 NM

CATEGORY	A				B		C		D	
S-ILS 30L#	257/24 200 (200-1/2)									
S-LOC 30L	640/24 583 (600-1/2)				640-1 1/4 583 (600-1 1/4)					
SIDESTEP 30R	640-1 585 (600-1)				640-1 3/4 585 (600-1 3/4)				640-2 585 (600-2)	

SW-2, 07 OCT 2021 to 04 NOV 2021

SW-2, 07 OCT 2021 to 04 NOV 2021