

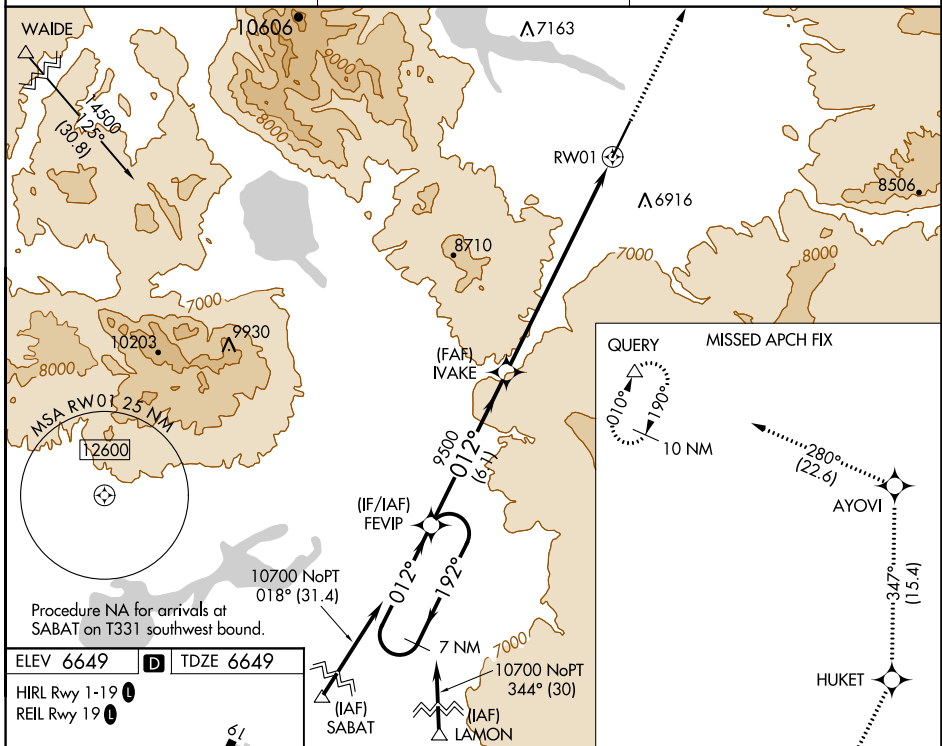
WAAS CH <b>86916</b> <b>W01A</b>	APP CRS <b>012°</b>	Rwy Idg TDZE Apt Elev	<b>8400</b> <b>6649</b> <b>6649</b>
--	------------------------	-----------------------------	---

# RNAV (GPS) RWY 1

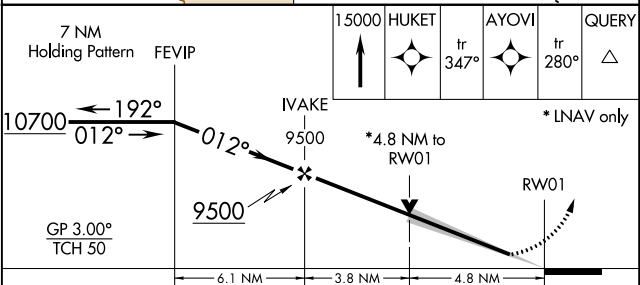
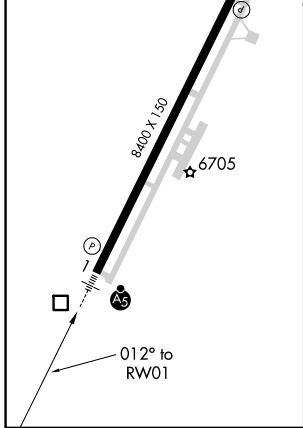
YELLOWSTONE (WYS)

<p><b>NA</b></p> <p><b>-20°C</b></p>	<p>DME/DME RNP-0.3 NA. Obtain local altimeter setting on CTAF; when not received, procedure NA. Inop table does not apply to LNAV Cats A and B.</p>	<p>MALSR</p>	<p>MISSED APPROACH: Climb to 1500m direct HUKET and on track 280° to AYOVI and on track 280° to QUERY and hold.</p>
--------------------------------------	---	--------------	---

AWOS-3P <b>118.1</b>	SALT LAKE CENTER <b>132.4 338.3</b>	UNICOM <b>123.0 (CTAF)</b>
-------------------------	--	-------------------------------



ELEV 6649	<b>D</b>	TDZE 6649
HIRL Rwy 1-19		REIL Rwy 19



CATEGORY	A	B	C	D
LPV DA	6849-1/2 200 (200-1/2)			
LNAV MDA	8240-1 1/4 1591 (1600-1 1/4)	8240-1 1/2 1591 (1600-1 1/2)	8240-2 1/2	1591 (1600-2 1/2)
<b>C</b> CIRCLING	8240-1 1/4 1591 (1600-1 1/4)	8240-1 1/2 1591 (1600-1 1/2)	8240-3	1591 (1600-3)

NW-1, 07 OCT 2021 to 04 NOV 2021

NW-1, 07 OCT 2021 to 04 NOV 2021