

LOC/DME I-GFQ 110.95 Chan 46(Y)	APP CRS 175°	Rwy Idg 12250 TDZE 542 Apt Elev 542
---	------------------------	--

ILS or LOC RWY 18R

AUSTIN-BERGSTROM INTL (AUS)

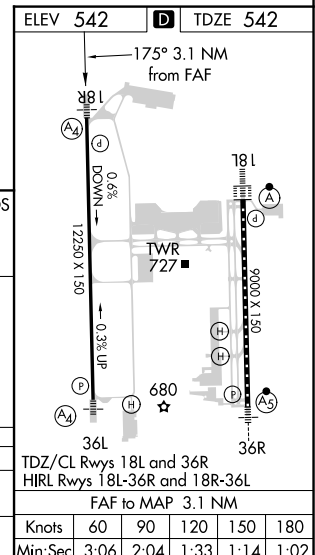
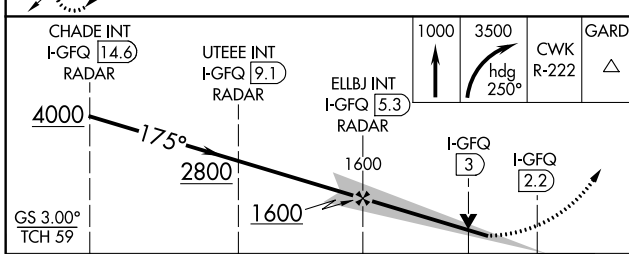
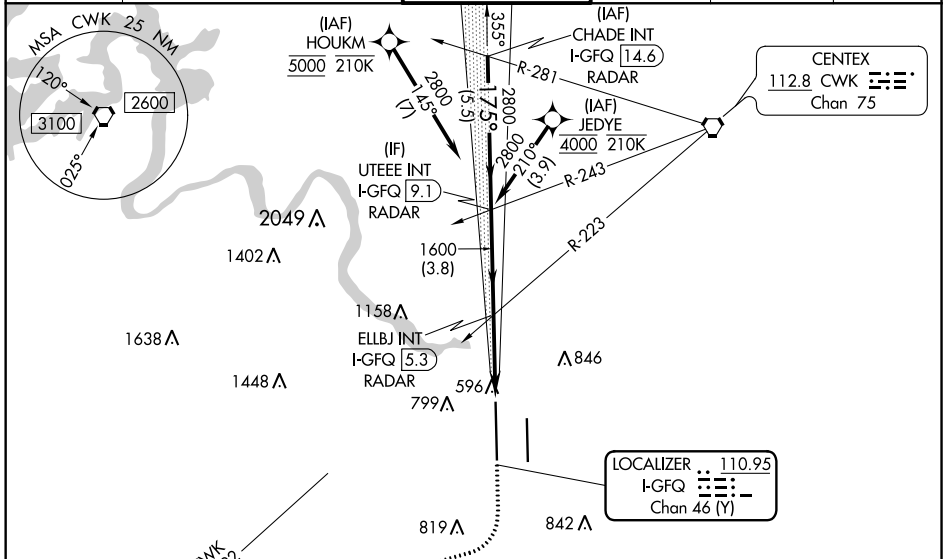
RNAV 1-GPS or RADAR required for procedure entry.
From HOUKM, JEDYE: RNAV 1-GPS required.

Simultaneous approach authorized. Inop table does not apply to S-ILS 18R. For inop ALS, increase S-LOC-18R Cats C, D and E visibility to RVR 4500.

MALS ---

MISSED APPROACH: Climb to 1000 then climbing right turn to 3500 on heading 250° and CWK VORTAC R-222 to GARDS INT/CWK 29.2 DME and hold.

D-ATIS 124.4	AUSTIN APP CON 127.225 317.65 (EAST) 120.875 270.25 (SOUTH) 119.0 370.85 (WEST)	AUSTIN TOWER 121.0 281.5	GND CON 121.9 348.6	CLNC DEL 125.5 263.0	CPDLC
------------------------	---	------------------------------------	-------------------------------	--------------------------------	-------



CATEGORY	A	B	C	D	E
S-ILS 18R		742/40	200 (200-¾)		
S-LOC 18R		860/40	318 (400-¾)		

SC-3, 07 OCT 2021 to 04 NOV 2021

SC-3, 07 OCT 2021 to 04 NOV 2021