

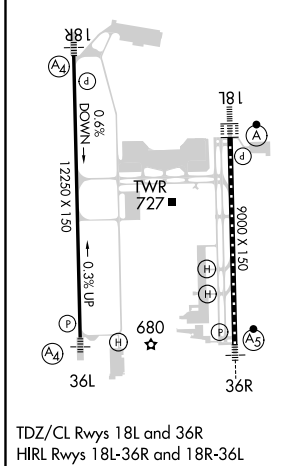
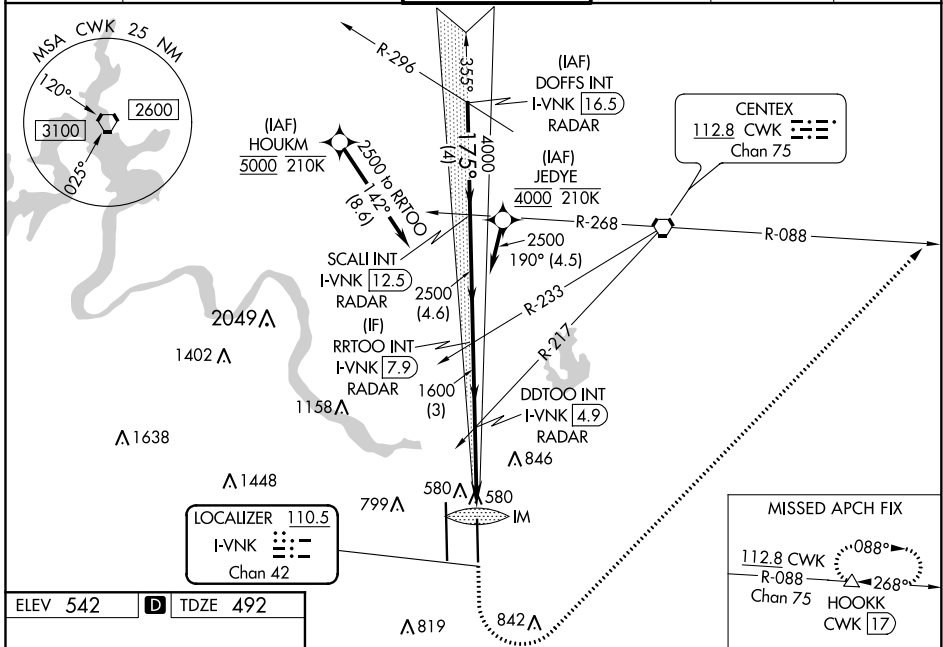
LOC/DME I-VNK 110.5 Chan 42	APP CRS 175°	Rwy Idg 9000 TDZE 492 Apt Elev 542
---	------------------------	---

ILS RWY 18L (CAT II & III)

AUSTIN-BERGSTROM INTL (AUS)

RNAV 1-GPS or RADAR required for procedure entry. DME required. From HOUKM, JEDYE: RNAV 1-GPS required.		ALSF-2 	MISSED APPROACH: Climb to 1000, then climbing left turn to 3000 on heading 040° and CWK VORTAC R-088 to HOOKK/CWK 17 DME and hold.
Simultaneous approach authorized.			

D-ATIS 124.4	AUSTIN APP CON 127.225 317.65 (EAST) 120.875 270.25 (SOUTH) 119.0 370.85 (WEST)	AUSTIN TOWER 121.0 281.5	GND CON 121.9 348.6	CLNC DEL 125.5 263.0	CPDLC
------------------------	---	------------------------------------	-------------------------------	--------------------------------	-------



ELEV 542		D	TDZE 492
VGSi and ILS glidepath not coincident (VGSi Angle 3.00/TCH 74). DOFFS INT I-VNK 116.5 RADAR SCALI INT I-VNK 12.5 RADAR RRTOO I-VNK 7.9 RADAR DDTOO I-VNK 4.9 RADAR		1000 3000 hdg 040° CWK R-088 HOOKK Δ	HOOKK Δ
GS 3.00° TCH 61	5000	4000	1600
	4 NM	4.6 NM	3 NM
CATEGORY	A	B	C
S-ILS 18L	CAT II RA 105/12 100 DA 592		
S-ILS 18L	CAT III RVR 06		

CATEGORY II & III ILS - SPECIAL AIRCREW & AIRCRAFT CERTIFICATION REQUIRED

SC-3, 07 OCT 2021 to 04 NOV 2021

SC-3, 07 OCT 2021 to 04 NOV 2021