

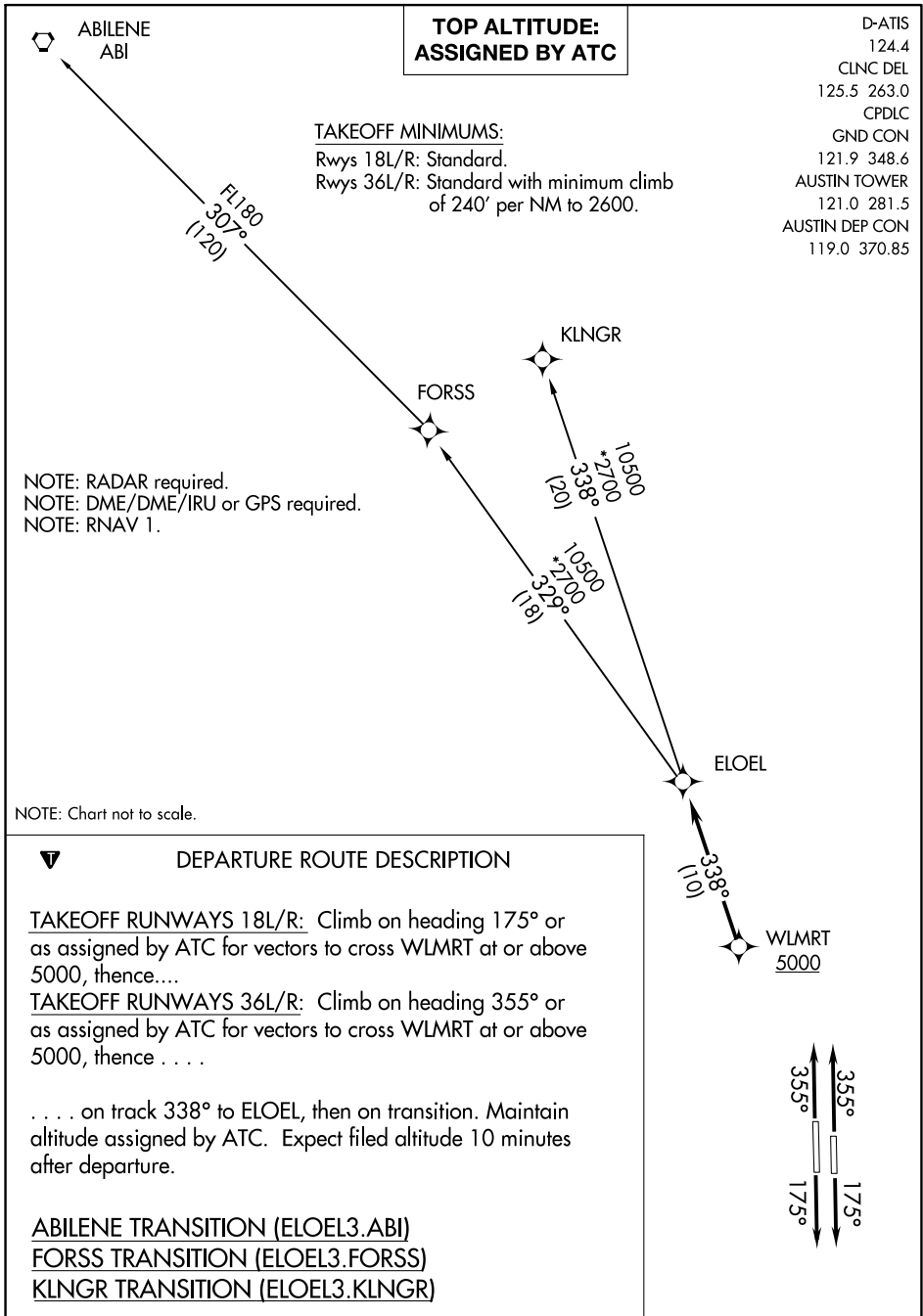
(ELOEL3.ELOEL) 21112

AUSTIN-BERGSTROM INTL (AUS)

ELOEL THREE DEPARTURE (RNAV)

AL-556 (FAA)

AUSTIN, TEXAS



**TOP ALTITUDE:
ASSIGNED BY ATC**

TAKEOFF MINIMUMS:
Rwys 18L/R: Standard.
Rwys 36L/R: Standard with minimum climb
of 240' per NM to 2600.

- D-ATIS 124.4
- CLNC DEL 125.5 263.0
- CPDLC
- GND CON 121.9 348.6
- AUSTIN TOWER 121.0 281.5
- AUSTIN DEP CON 119.0 370.85

NOTE: RADAR required.
NOTE: DME/DME/IRU or GPS required.
NOTE: RNAV 1.

NOTE: Chart not to scale.

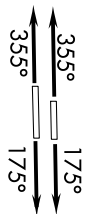
DEPARTURE ROUTE DESCRIPTION

TAKEOFF RUNWAYS 18L/R: Climb on heading 175° or as assigned by ATC for vectors to cross WLMRT at or above 5000, thence....

TAKEOFF RUNWAYS 36L/R: Climb on heading 355° or as assigned by ATC for vectors to cross WLMRT at or above 5000, thence

. . . . on track 338° to ELOEL, then on transition. Maintain altitude assigned by ATC. Expect filed altitude 10 minutes after departure.

- ABILENE TRANSITION (ELOEL3.ABI)
- FORSS TRANSITION (ELOEL3.FORSS)
- KLNCR TRANSITION (ELOEL3.KLNCR)



SC-3, 07 OCT 2021 to 04 NOV 2021

SC-3, 07 OCT 2021 to 04 NOV 2021

ELOEL THREE DEPARTURE (RNAV)

(ELOEL3.ELOEL) 22APR21

AUSTIN, TEXAS

AUSTIN-BERGSTROM INTL (AUS)