

VOR/DME VNY <b>113.1</b> Chan 78	APP CRS <b>155°</b>	Rwy Idg TDZE Apt Elev	<b>N/A</b> <b>N/A</b> <b>802</b>
--	------------------------	-----------------------------	--

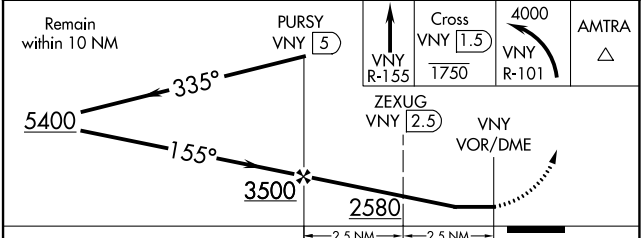
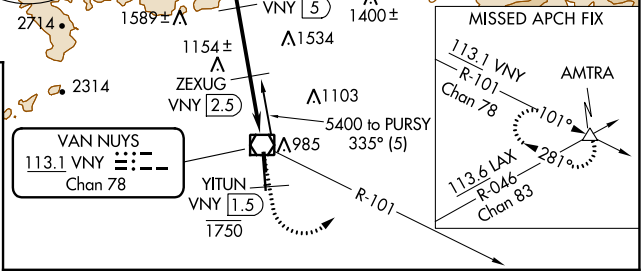
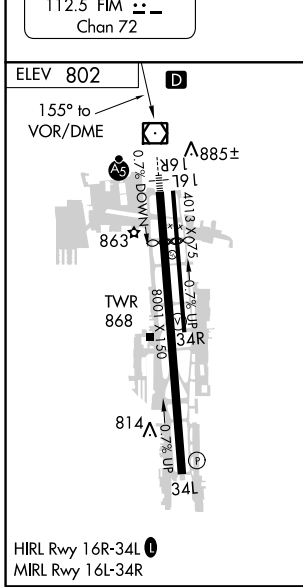
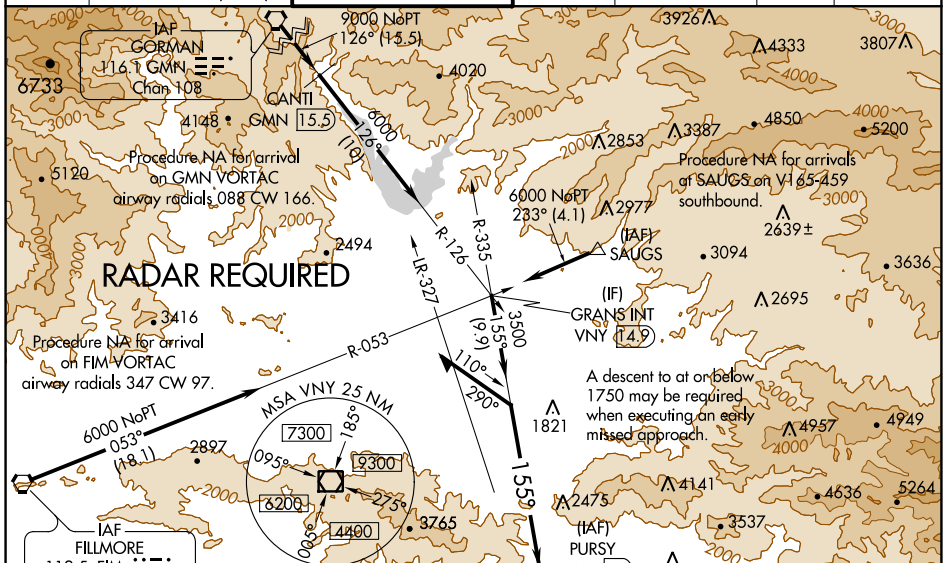
# VOR-B

VAN NUYS (VNY)

**V** DME required and RADAR required for monitoring of missed approach. Circling Rwy 16L NA at night. Circling NA for Cat D west of Rwy 16R-34L. When local altimeter setting not received, use Burbank altimeter setting and increase all MDAs to 20 feet.

**MISSED APPROACH:** Climb on VNY VOR/DME R-155 to cross YITUN/VNY 1.5 DME at or below 1750 then climbing left turn to 4000 on VNY VOR/DME R-101 to AMTRA INT and hold.

ATIS <b>127.55</b>	SOCAL APP CON <b>120.4 360.6 (NORTH)</b> <b>134.2 338.2 (WEST)</b>	VAN NUYS TOWER * <b>119.3 (CTAF) 0 239.0</b>	GND CON <b>121.7</b>	CLNC DEL <b>126.6 239.0</b>	CPDLC	UNICOM <b>122.95</b>
-----------------------	--	---	-------------------------	--------------------------------	-------	-------------------------



CATEGORY	A	B	C	D
<b>C</b> CIRCLING	1660-1¼	858 (900-1¼)	1660-2½	1740-3
			858 (900-2½)	938 (1000-3)

SW-3, 07 OCT 2021 to 04 NOV 2021

SW-3, 07 OCT 2021 to 04 NOV 2021