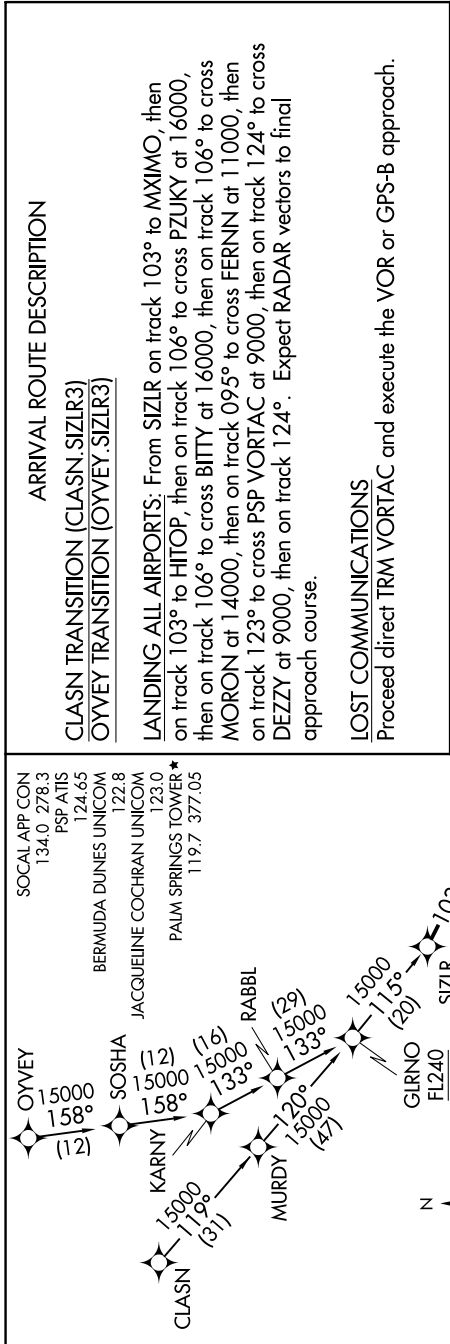


SIZLR THREE ARRIVAL (RNAV)

AL-545 (FAA)

PALM SPRINGS, CALIFORNIA

SW-3, 07 OCT 2021 to 04 NOV 2021



ARRIVAL ROUTE DESCRIPTION

CLASN TRANSITION (CLASN.SIZLR3)
OYVEY TRANSITION (OYVEY.SIZLR3)

LANDING ALL AIRPORTS: From SIZLR on track 103° to MXIMO, then on track 103° to HITOP, then on track 106° to cross PZUKY at 16000, then on track 106° to cross BITTY at 16000, then on track 106° to cross MORON at 14000, then on track 095° to cross FERNIN at 11000, then on track 123° to cross PSP VORTAC at 9000, then on track 124° to cross DEZZY at 9000, then on track 124°. Expect RADAR vectors to final approach course.

LOST COMMUNICATIONS

Proceed direct TRM VORTAC and execute the VOR or GFS-B approach.

- NOTE: RADAR required.
- NOTE: RNAV 1.
- NOTE: DME/DME/IRU or GPS required.
- NOTE: Turbojet and turboprop aircraft only.

NOTE: Chart not to scale.

SIZLR THREE ARRIVAL (RNAV)

PALM SPRINGS, CALIFORNIA

SW-3, 07 OCT 2021 to 04 NOV 2021