

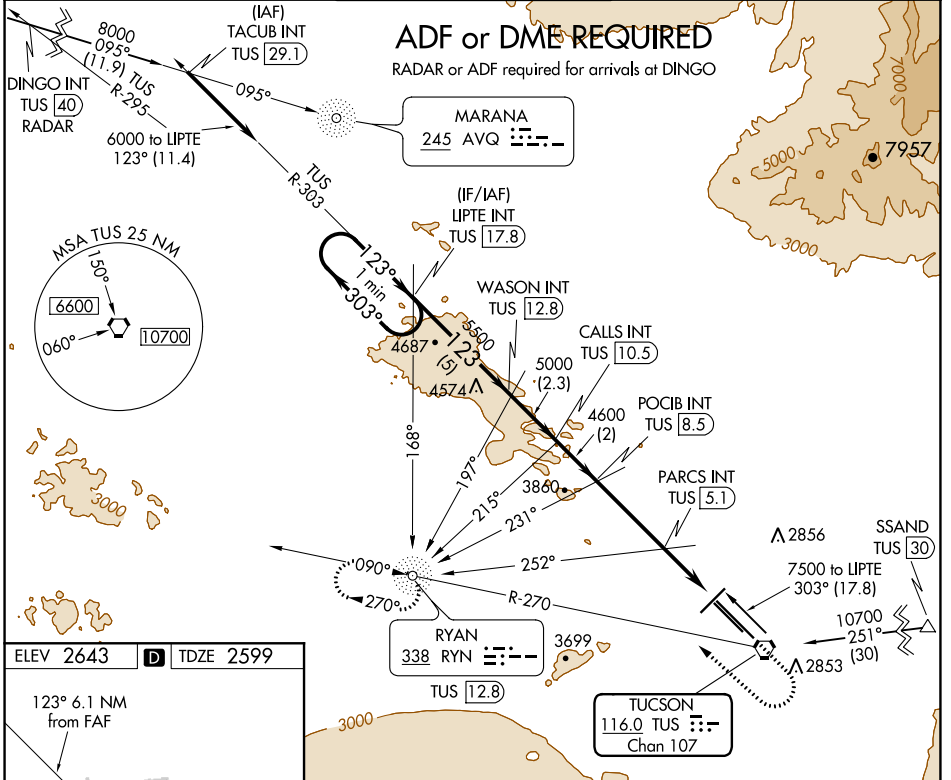
VORTAC TUS <b>116.0</b> Chan <b>107</b>	APP CRS <b>123°</b>	Rwy ldg <b>10996</b> TDZE <b>2599</b> Apt Elev <b>2643</b>
---	------------------------	--

# VOR or TACAN RWY 11L

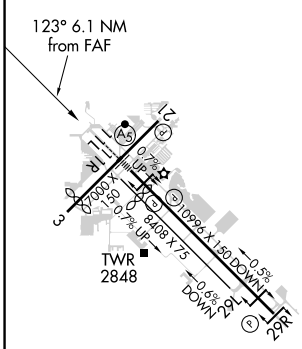
TUCSON INTL (TUS)

<p><b>ADF or DME required.</b> For inoperative ALS, increase Cat E visibility to 1¼ SM.</p>	<p>MALS R</p>	<p>MISSED APPROACH: Climb to 4000 then climbing right turn to 6000 (Cat. E 8000) on heading 300° and TUS VORTAC R-270 to RYN NDB/TUS 12.8 DME and hold.</p>
---	---------------	---

ATIS <b>123.8 279.65</b>	TUCSON APP CON <b>119.4 318.1</b>	TUCSON TOWER <b>118.3 257.8</b>	GND CON <b>124.4 348.6</b>	CLNC DEL <b>126.65 326.2</b>
-----------------------------	--------------------------------------	------------------------------------	-------------------------------	---------------------------------

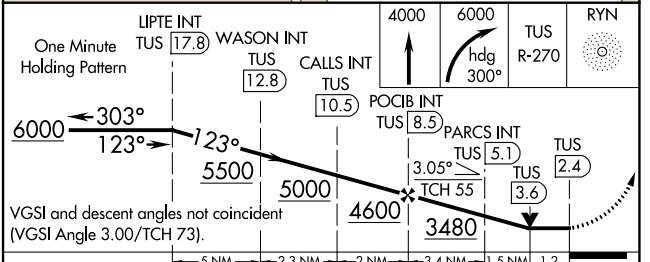


ELEV 2643	<b>D</b>	TDZE 2599
-----------	----------	-----------



FAF to MAP 6.1 NM

Knots	60	90	120	150	180
Min:Sec	6:06	4:04	3:03	2:26	2:02



CATEGORY	A	B	C	D	E
S-11L	3020/24	421 (500-½)	3020/40	421 (500-¾)	
CIRCLING	3160-1 517 (600-1)	3180-1 537 (600-1)	3200-1½ 557 (600-1½)	3660-3 1017 (1100-3)	3920-3 1277 (1300-3)

SW-4, 07 OCT 2021 to 04 NOV 2021

SW-4, 07 OCT 2021 to 04 NOV 2021