

LOC/DME I-TUS <b>111.7</b> Chan <b>54</b>	APP CRS <b>123°</b>	Rwy Idg <b>10996</b> TDZE <b>2599</b> Apt Elev <b>2643</b>
---	------------------------	--

# ILS or LOC RWY 11L

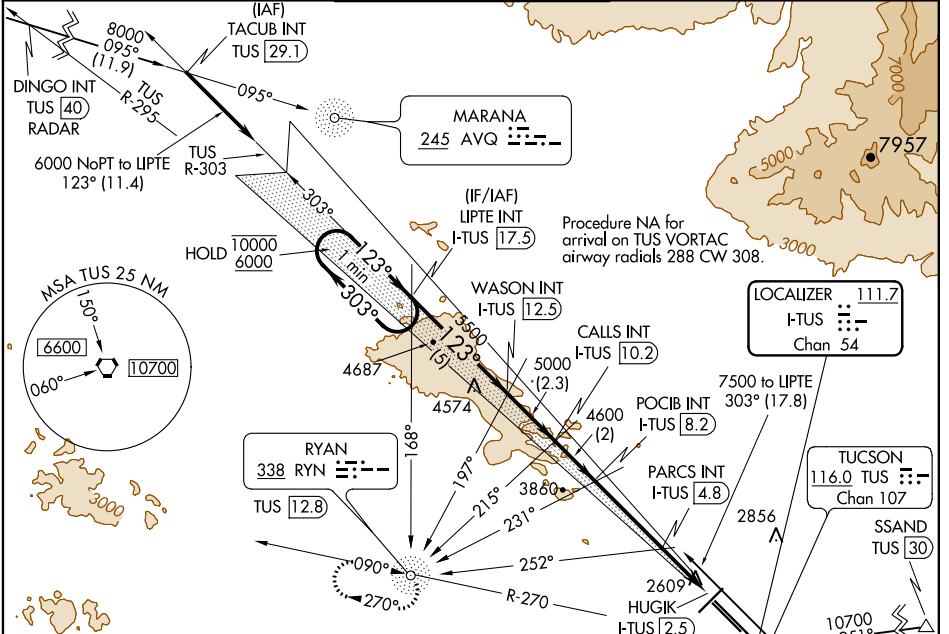
TUCSON INTL (TUS)

ADF or RADAR required for arrivals at DINGO.  
ADF or DME required.  
DME required for arrivals at SSAND.

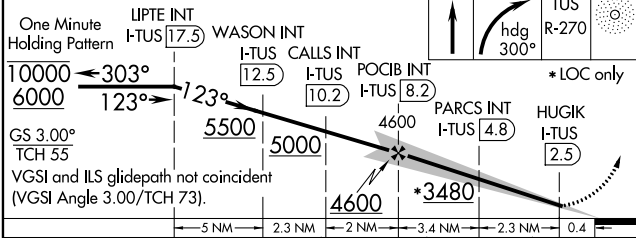
For inop ALS, increase S-ILS Cat E visibility to RVR 4000, S-LOC 11L Cat E visibility to 2 1/2 SM; PARCS FIX MINIMUMS: S-LOC 11L Cat C/D/E visibility to RVR 5500.

MALS R MISSED APPROACH: Climb to 4000 then climbing right turn to 6000 on heading 300° and TUS VORTAC R-270 to RYN NDB/TUS 12.8 DME and hold.

ATIS <b>123.8 279.65</b>	TUCSON APP CON <b>119.4 318.1</b>	TUCSON TOWER <b>118.3 257.8</b>	GND CON <b>124.4 348.6</b>	CLNC DEL <b>126.65 326.2</b>
-----------------------------	--------------------------------------	------------------------------------	-------------------------------	---------------------------------

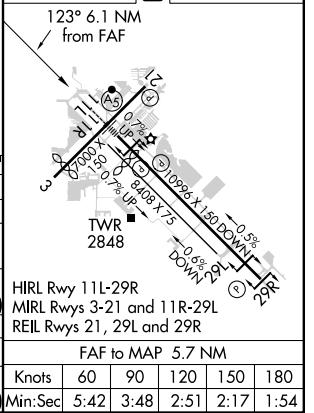


Use I-TUS DME when on the localizer course.



ELEV 2643	TDZE 2599
-----------	-----------

CATEGORY	A	B	C	D	E
S-ILS 11L	2800/24 201 (200-1/2)				
S-LOC 11L	3480/40	881 (900-3/4)	3480-2	881 (900-2)	
CIRCLING	3480-1 1/4	837 (900-1 1/4)	3480-2 1/2 837 (900-2 1/2)	3660-3 1017 (1100-3)	3920-3 277 (1300-3)
PARCS FIX MINIMUMS					
S-LOC 11L	2960/24	361 (400-1/2)	2960/40	361 (400-3/4)	
CIRCLING	3160-1 517 (600-1)	3220-1 577 (600-1)	3220-1 1/2 577 (600-1 1/2)	3660-3 1017 (1100-3)	3920-3 277 (1300-3)



SW-4, 07 OCT 2021 to 04 NOV 2021

SW-4, 07 OCT 2021 to 04 NOV 2021