

# BURRO FOUR DEPARTURE (RNAV)

AL-430 (FAA)

TUCSON INTL (TUS)  
TUCSON, ARIZONA

SW-4, 07 OCT 2021 to 04 NOV 2021

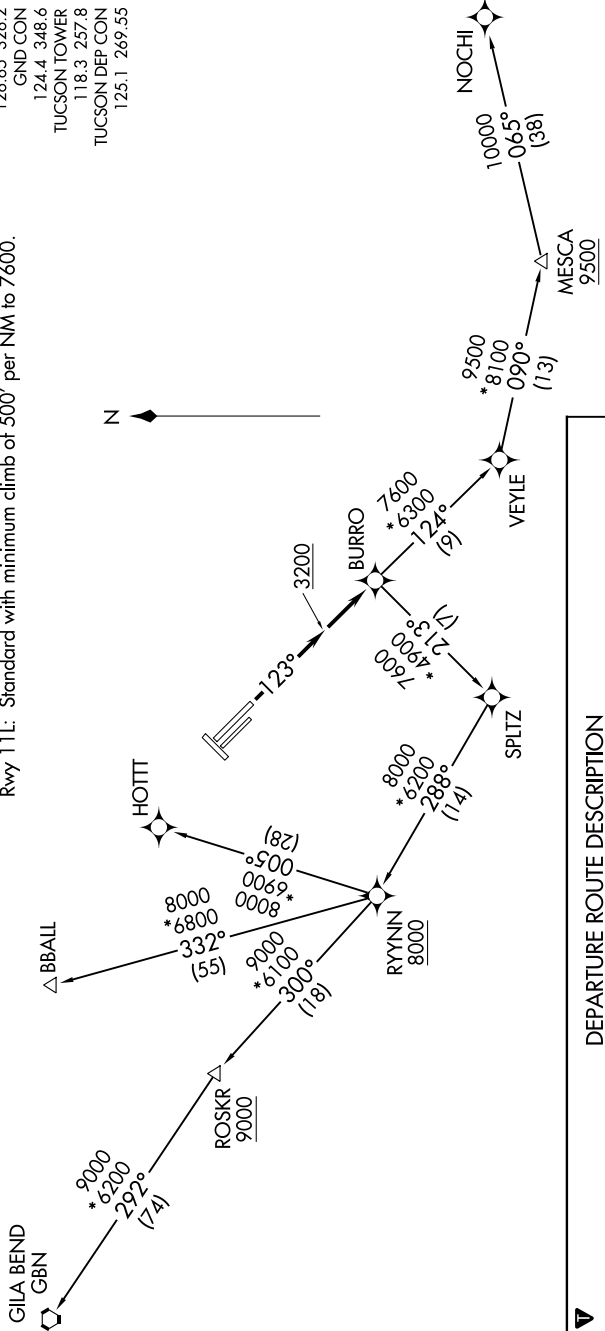
**TOP ALTITUDE:**  
17000

### TAKEOFF MINIMUMS

Rwys 3, 11R, 21, 29L, 29R: NA - ATC.

Rwy 11L: Standard with minimum climb of 500' per NM to 7600.

ATIS 123.8 279.65  
CLNC DEL 126.65 326.2  
GND CON 124.4 348.6  
TUCSON TOWER 118.3 257.8  
TUCSON DEP CON 125.1 269.55



NOTE: GPS required.  
NOTE: RNAV 1.  
NOTE: Chart not to scale.

**DEPARTURE ROUTE DESCRIPTION**

**TAKEOFF RUNWAY 11L:** Climb heading 123° to 3200 MSL, then direct BURRO, thence . . .

. . . via (transition) maintain 17000, expect filed altitude 10 minutes after departure.

**BBALL TRANSITION (BURRO4.BBALL)**  
**GILA BEND TRANSITION (BURRO4.GBN)**  
**HOTT TRANSITION (BURRO4.HOTT)**  
**NOCHI TRANSITION (BURRO4.NOCHI)**

SW-4, 07 OCT 2021 to 04 NOV 2021