

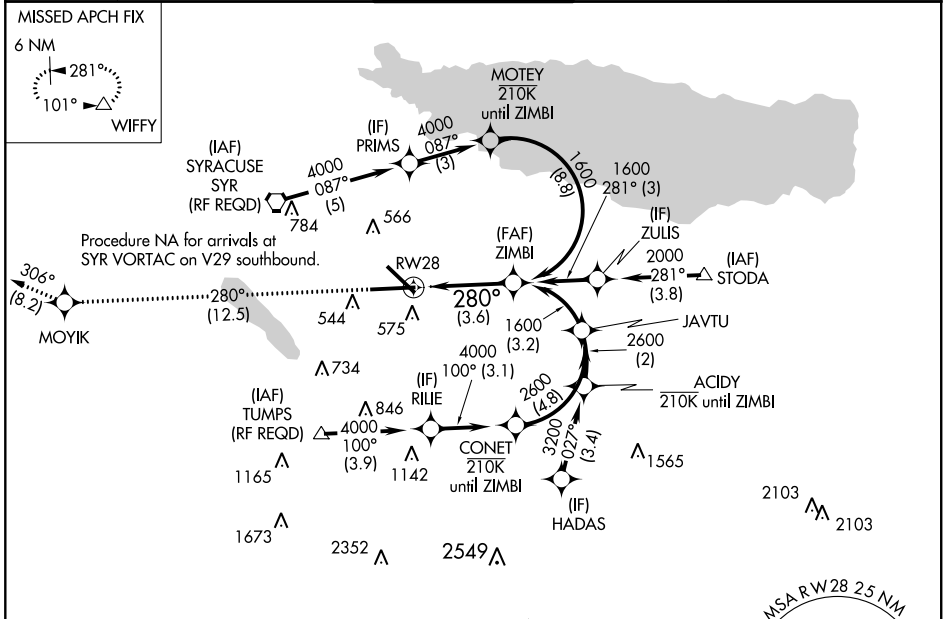
APP CRS	Rwy Idg	<b>9003</b>
<b>280°</b>	TDZE	<b>413</b>
	Apt Elev	<b>421</b>

# RNAV (RNP) Y RWY 28

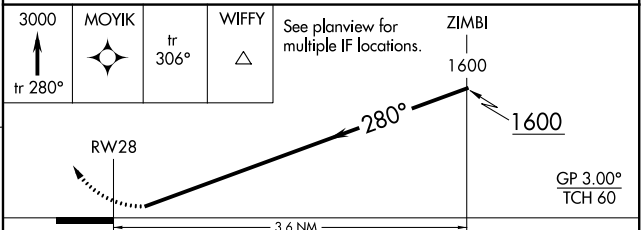
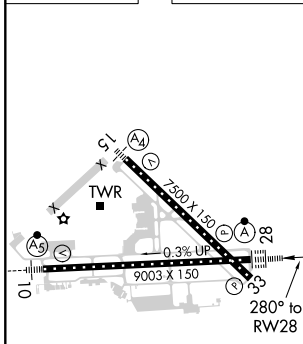
SYRACUSE HANCOCK INTL (SYR)

RNP AR APCH.	ALSF-2	MISSED APPROACH: Climb to 3000 on track 280° to MOYIK and on track 306° to WIFFY and hold.
<p>▼ For uncompensated Baro-VNAV systems, procedure NA below -18°C or above 54°C. For inop ALS, increase RNP 0.15 all Cats visibility to 1½. For inop ALS, increase RNP 0.30 all Cats visibility to 1%.</p>		

ATIS	SYRACUSE APP CON	SYRACUSE TOWER	GND CON	CLNC DEL
<b>124.225</b>	<b>126.125 269.125</b>	<b>120.3 239.0</b>	<b>121.7 348.6</b>	<b>125.05 257.775</b>



ELEV 421	<b>D</b>	TDZE 413
----------	----------	----------



CATEGORY	A	B	C	D
RNP 0.15 DA		862/55	449 (500-1)	
RNP 0.30 DA		957-1½	544 (600-1%)	

**AUTHORIZATION REQUIRED**

NE-2, 07 OCT 2021 to 04 NOV 2021

NE-2, 07 OCT 2021 to 04 NOV 2021