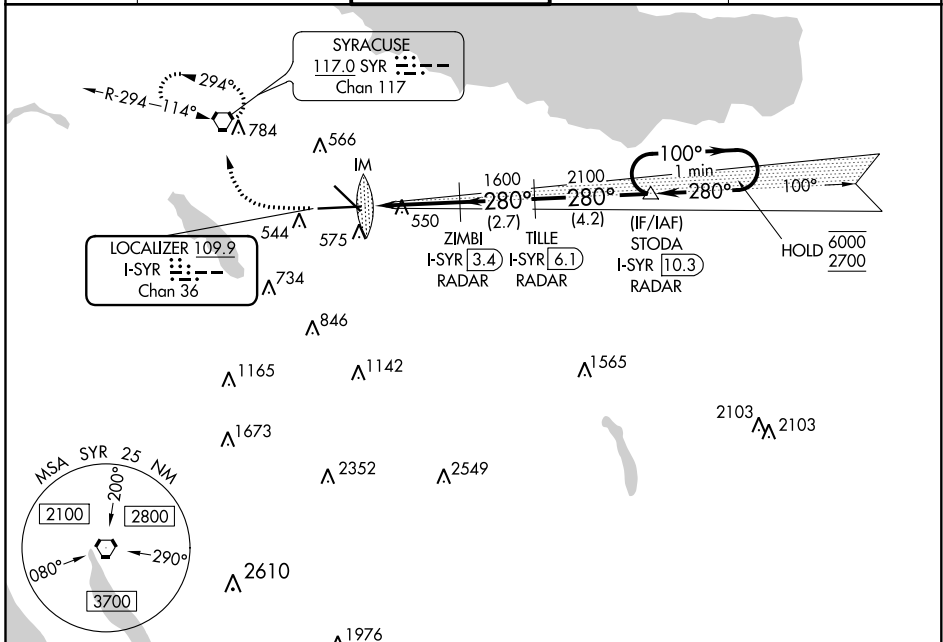


LOC/DME I-SYR <b>109.9</b> Chan <b>36</b>	APP CRS <b>280°</b>	Rwy Idg TDZE <b>413</b> Apt Elev <b>421</b>	<b>9003</b> <b>413</b> <b>421</b>
---	------------------------	---	---

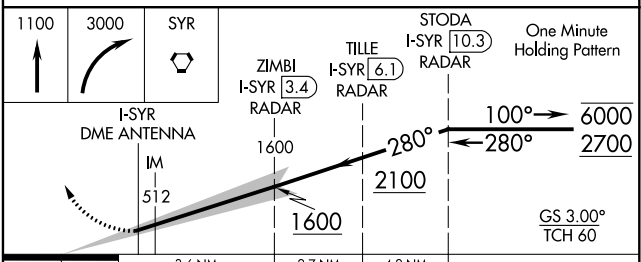
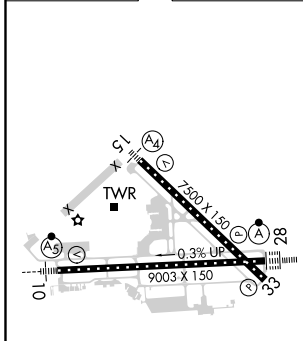
**ILS RWY 28 (CAT II)**  
SYRACUSE HANCOCK INTL (SYR)

DME or RADAR required.	ALSF-2	MISSED APPROACH: Climb to 1100 then climbing right turn to 3000 direct SYR VORTAC and hold, continue climb-in-hold to 3000.
▼ RVR 1000 authorized with specific OPSEC, MSPEC, or LOA approval and use of autoland or HUD to touchdown.		

ATIS <b>124.225</b>	SYRACUSE APP CON <b>126.125 269.125</b>	SYRACUSE TOWER <b>120.3 239.0</b>	GND CON <b>121.7 348.6</b>	CLNC DEL <b>125.05 257.775</b>
------------------------	--	--------------------------------------	-------------------------------	-----------------------------------



ELEV <b>421</b>	<b>D</b>	TDZE <b>413</b>
-----------------	----------	-----------------



CATEGORY	A	B	C	D
S-ILS 28	RA 100/12 100 DA 513			

**CATEGORY II ILS - SPECIAL AIRCREW & AIRCRAFT CERTIFICATION REQUIRED**

NE-2, 07 OCT 2021 to 04 NOV 2021

NE-2, 07 OCT 2021 to 04 NOV 2021