

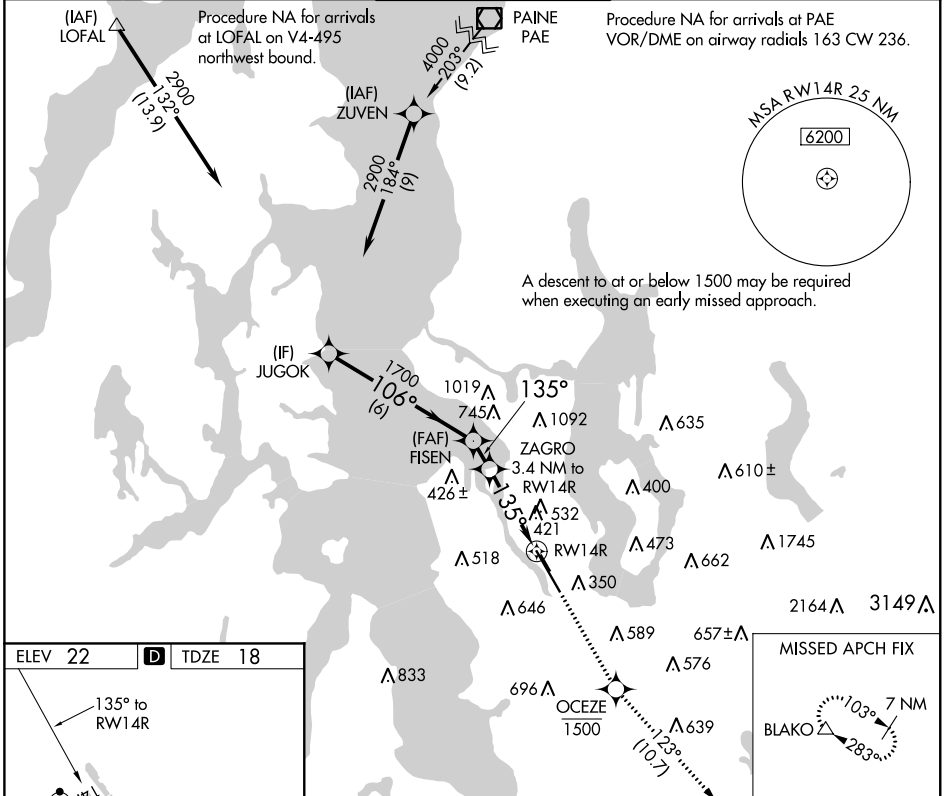
APP CRS	Rwy Idg	<b>9120</b>
<b>135°</b>	TDZE	<b>18</b>
	Apt Elev	<b>22</b>

# RNAV (GPS) Y RWY 14R

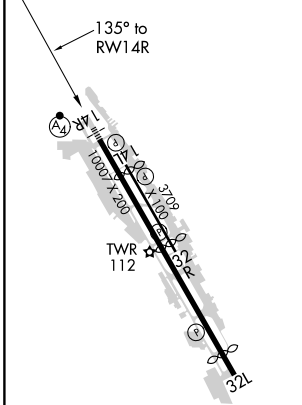
BOEING FLD/KING COUNTY INTL (BFI)

RNP APCH-GPS	MALSF	MISSED APPROACH: Climb direct OCEZE, cross OCEZE at or below 1500, then climb to 6400 on track 123° to BLAKO and hold, continue climb-in-hold to 6400.
<p>▼ Circling NA for Cats C and D northeast of Rwy 14L-32R. For inop ALS, increase LNAV Cat C and D visibility to 1½ SM. Rwy 14R helicopter visibility below RVR 4000 NA. Circling Rwy 32R NA at night.</p>		

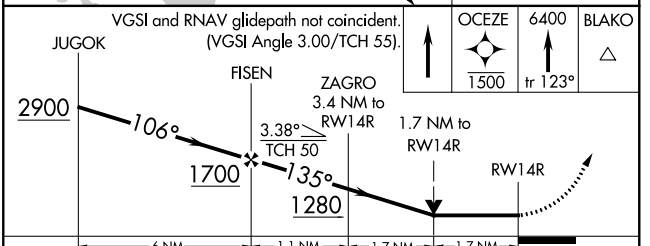
ATIS	SEATTLE APP CON	BOEING TOWER	GND CON	CLNC DEL
<b>127.75</b>	<b>119.2 284.7</b>	<b>120.6 257.8</b>	<b>121.9</b>	<b>132.4</b>



ELEV 22	<b>D</b>	TDZE 18
---------	----------	---------



MIRL Rwy 14L-32R  
 HIRL Rwy 14R-32L  
 RELL Rwy 14L, 32L and 32R



CATEGORY	A	B	C	D
LNAV MDA	680/40	662 (700-¾)	680-1¾	662 (700-1¾)
<b>C</b> CIRCLING	760-1 738 (800-1)	880-1¼ 858 (900-1¼)	960-2¾ 938 (1000-2¾)	960-3 938 (1000-3)

NW-1, 07 OCT 2021 to 04 NOV 2021

NW-1, 07 OCT 2021 to 04 NOV 2021