

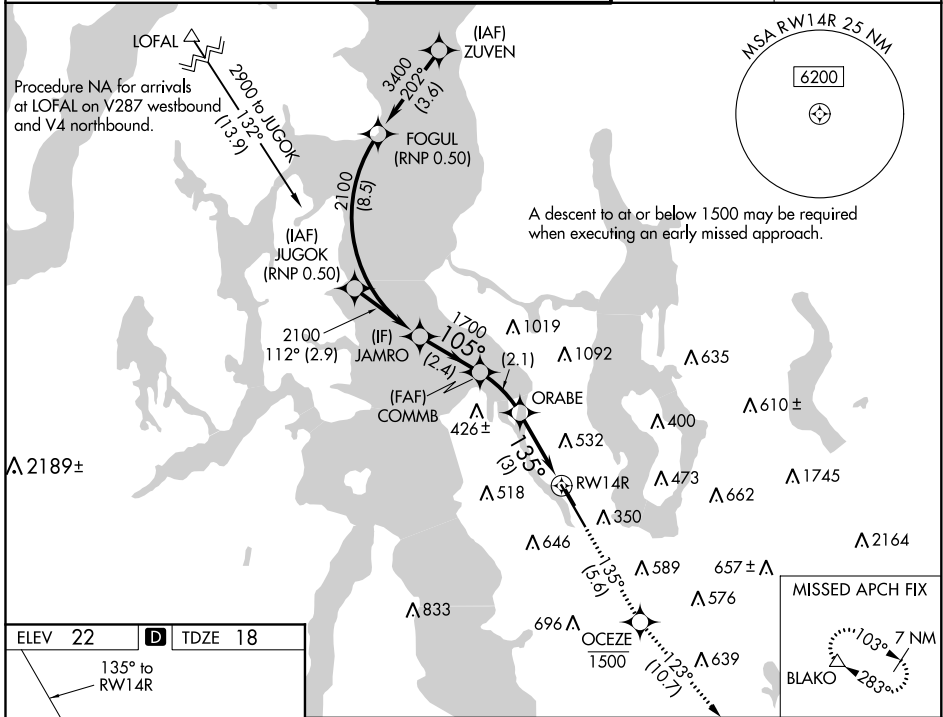
| | | |
|-------------|----------|-------------|
| APP CRS | Rwy Idg | 9120 |
| 135° | TDZE | 18 |
| | Apt Elev | 22 |

RNAV (RNP) Z RWY 14R

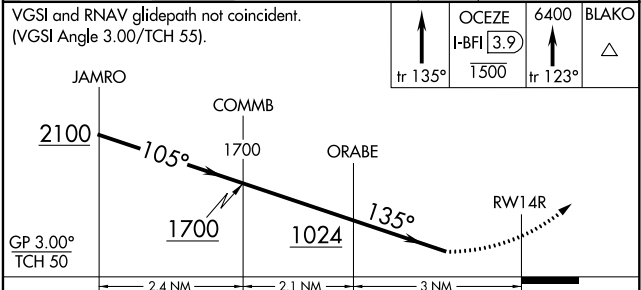
BOEING FLD/KING COUNTY INTL (BFI)

| | | |
|--|-------|--|
| RNP AR APCH-GPS | MALSF | MISSED APPROACH: Climb on track 135° to cross OCEZE at or below 1500 then climb to 6400 on track 123° to BLAKO and hold, continue climb-in-hold to 6400. |
| <p>▼ Inop table does not apply to RNP 0.30 DA. For inop ALS, increase RNP 0.15 DA Cat D visibility to 1¼ SM. For uncompensated Baro-VNAV systems, LNAV/VNAV NA below -6°C or above 54°C.</p> | | |

| | | | | |
|---------------|--------------------|--------------------|--------------|--------------|
| ATIS | SEATTLE APP CON | BOEING TOWER | GND CON | CLNC DEL |
| 127.75 | 119.2 284.7 | 120.6 257.8 | 121.9 | 132.4 |



| | | | | |
|------|-----------|----------|------|-----------|
| ELEV | 22 | D | TDZE | 18 |
|------|-----------|----------|------|-----------|



| | | | | |
|-------------|---|--------|--------------|---|
| CATEGORY | A | B | C | D |
| RNP 0.15 DA | | 542-1½ | 524 (600-1½) | |
| RNP 0.30 DA | | 742-2½ | 724 (800-2½) | |

AUTHORIZATION REQUIRED

NW-1, 07 OCT 2021 to 04 NOV 2021

NW-1, 07 OCT 2021 to 04 NOV 2021