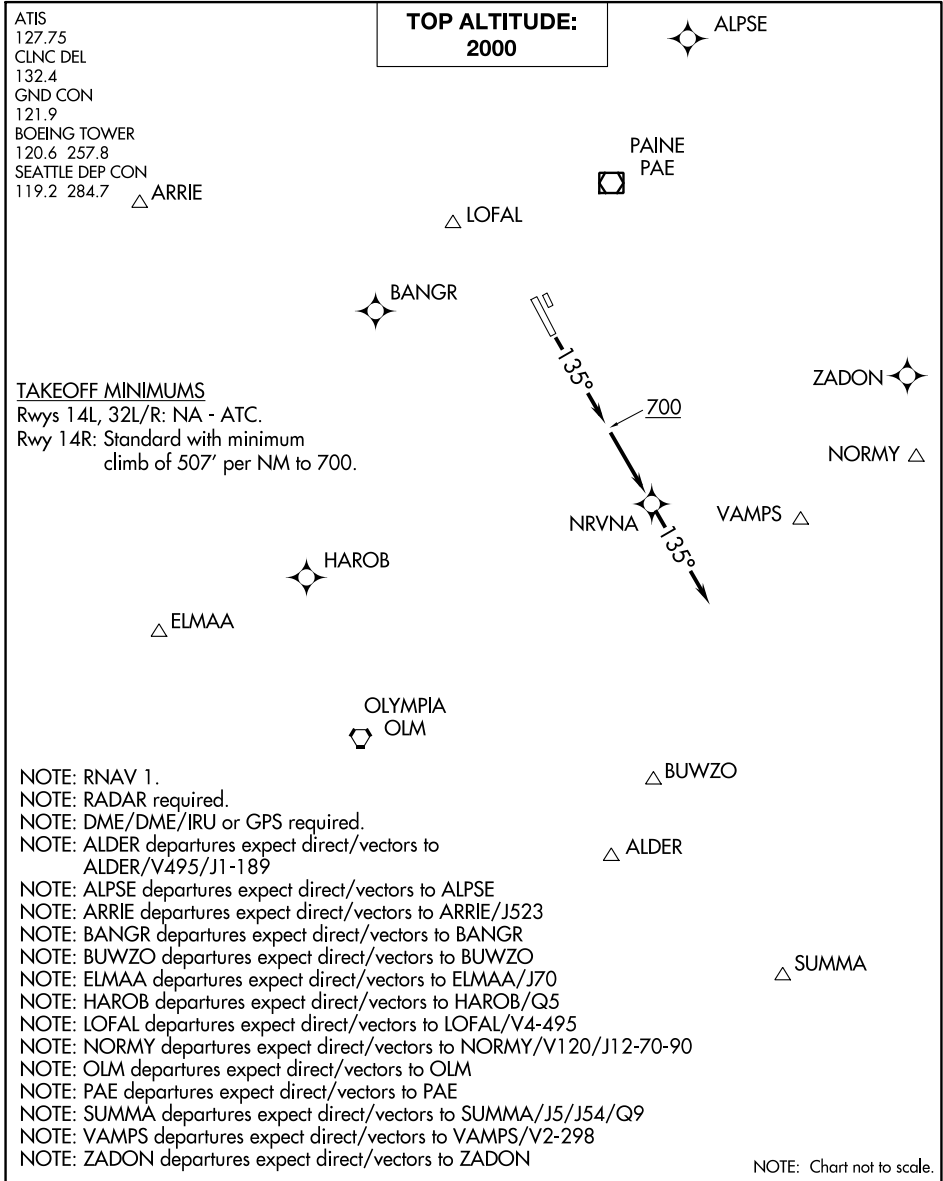


(NRVNA1.NRVNA) 21112

AL-384 (FAA)

BOEING FLD/KING COUNTY INTL (BFI)
SEATTLE, WASHINGTON

NRVNA ONE DEPARTURE (RNAV)



NW-1, 07 OCT 2021 to 04 NOV 2021

NW-1, 07 OCT 2021 to 04 NOV 2021

DEPARTURE ROUTE DESCRIPTION

TAKEOFF RUNWAY 14R: Climb heading 135° to 700, then direct NRVNA, then on track 135° for RADAR vectors to assigned route/fix, maintain 2000 or as assigned by ATC.
Expect clearance to filed altitude/flight level within three minutes after departure.

NRVNA ONE DEPARTURE (RNAV)
(NRVNA1.NRVNA) 12OCT17

SEATTLE, WASHINGTON
BOEING FLD/KING COUNTY INTL (BFI)