

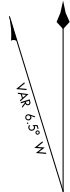
# AIRPORT DIAGRAM

AL-305 (FAA)

EXEC (ORL)  
ORLANDO, FLORIDA

ATIS  
 127.25  
 EXECUTIVE TOWER\*  
 118.7 239.0  
 GND CON  
 121.4 239.0  
 CLNC DEL  
 128.45

**D**

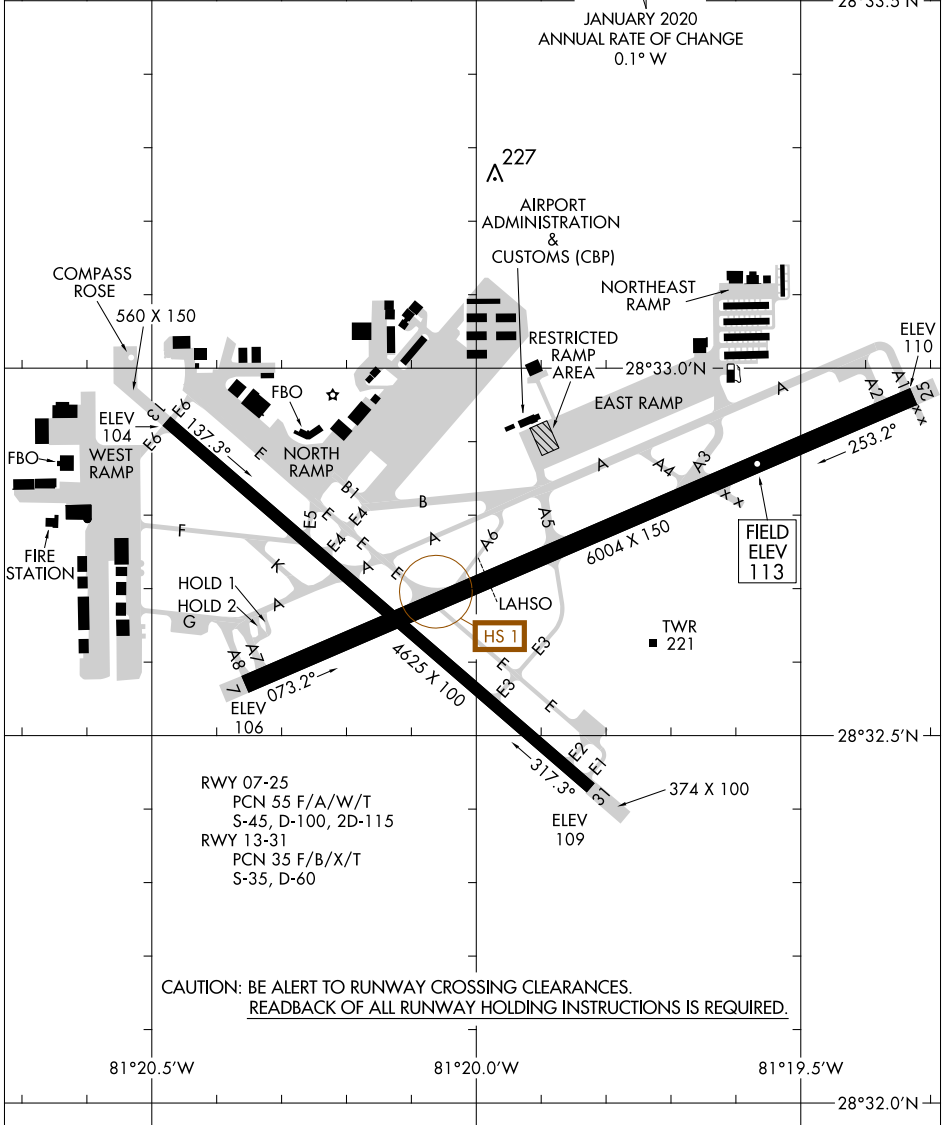


JANUARY 2020  
 ANNUAL RATE OF CHANGE  
 0.1° W

28°33.5'N

SE-3, 07 OCT 2021 to 04 NOV 2021

SE-3, 07 OCT 2021 to 04 NOV 2021



81°20.5'W

81°20.0'W

81°19.5'W

28°32.5'N

28°32.0'N

# AIRPORT DIAGRAM

ORLANDO, FLORIDA  
EXEC (ORL)