

# GULLI TWO ARRIVAL

OKLAHOMA CITY, OKLAHOMA

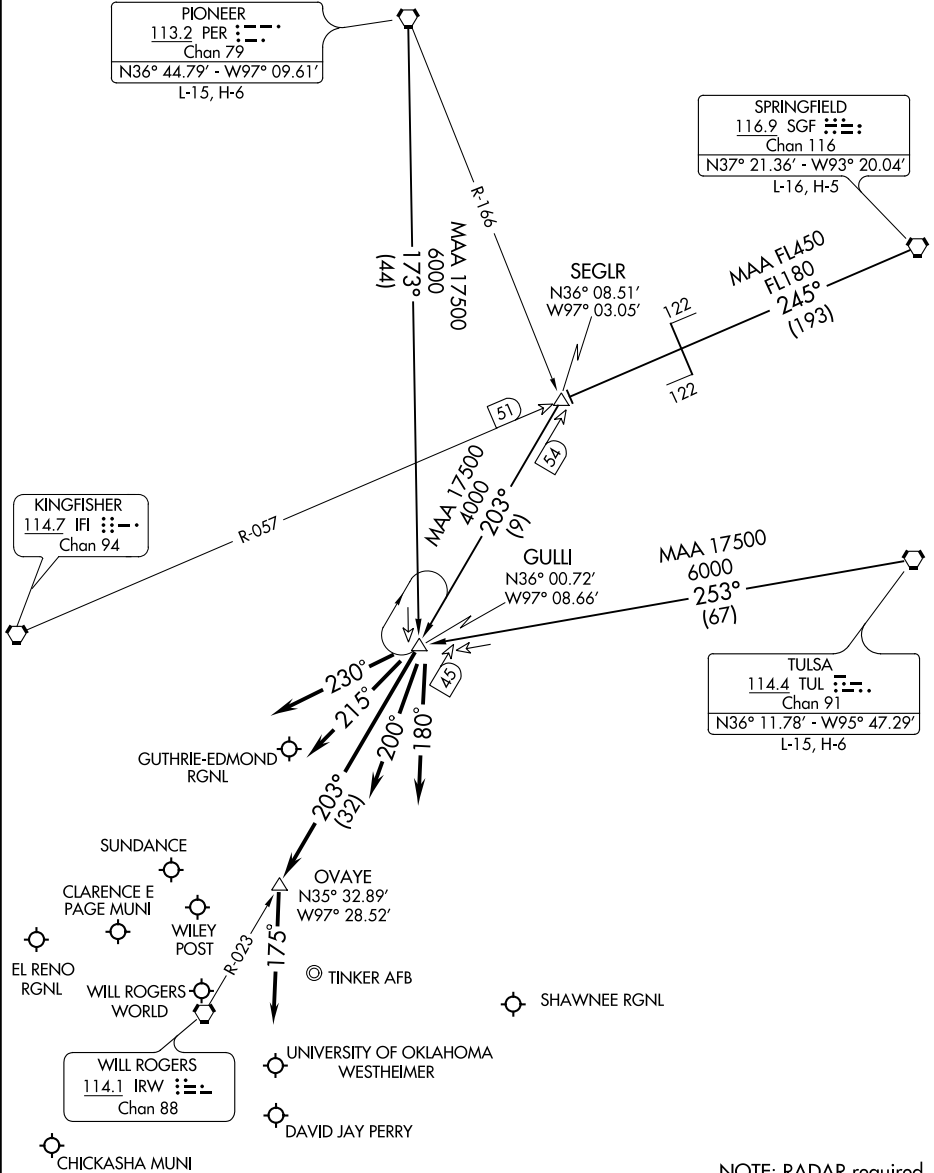
OKC APP CON  
124.2 336.4

PIONEER	
113.2 PER	⋯⋯⋯
Chan 79	
N36° 44.79' - W97° 09.61'	
L-15, H-6	

SPRINGFIELD	
116.9 SGF	⋯⋯⋯
Chan 116	
N37° 21.36' - W93° 20.04'	
L-16, H-5	

KINGFISHER	
114.7 IFI	⋯⋯⋯
Chan 94	

TULSA	
114.4 TUL	⋯⋯⋯
Chan 91	
N36° 11.78' - W95° 47.29'	
L-15, H-6	



SC-1, 07 OCT 2021 to 04 NOV 2021

SC-1, 07 OCT 2021 to 04 NOV 2021

(NARRATIVE ON FOLLOWING PAGE)

NOTE: RADAR required.

NOTE: Chart not to scale.

# GULLI TWO ARRIVAL

(GULLI.GULLI2) 29MAR18

OKLAHOMA CITY, OKLAHOMA