

SNDBR ONE ARRIVAL (RNAV) Transition Routes

MIAMI, FLORIDA

RNAV 1 - DME/DME/IRU or GPS
 CANOA TRANSITION, RNP 1 - GPS
 MAXIM TRANSITION, RNP 1 - GPS
 IKBIX TRANSITION, RNP 1 - GPS

RADAR required

MIAMI APP CON
 120.5 350.225
 MIA D-ATIS
 119.15
 KHST ATIS *
 132.275 269.9
 TMB ATIS
 124.0
 X51 AWOS-3
 118.375

NOTE: Expect "descend via" clearance and landing direction (east or west) by ARTCC.
 For vertical navigation planning, MIA landing east, select Rwy 9,
 MIA landing west, select Rwy 30.

NOTE: MIA approach will issue landing runway.

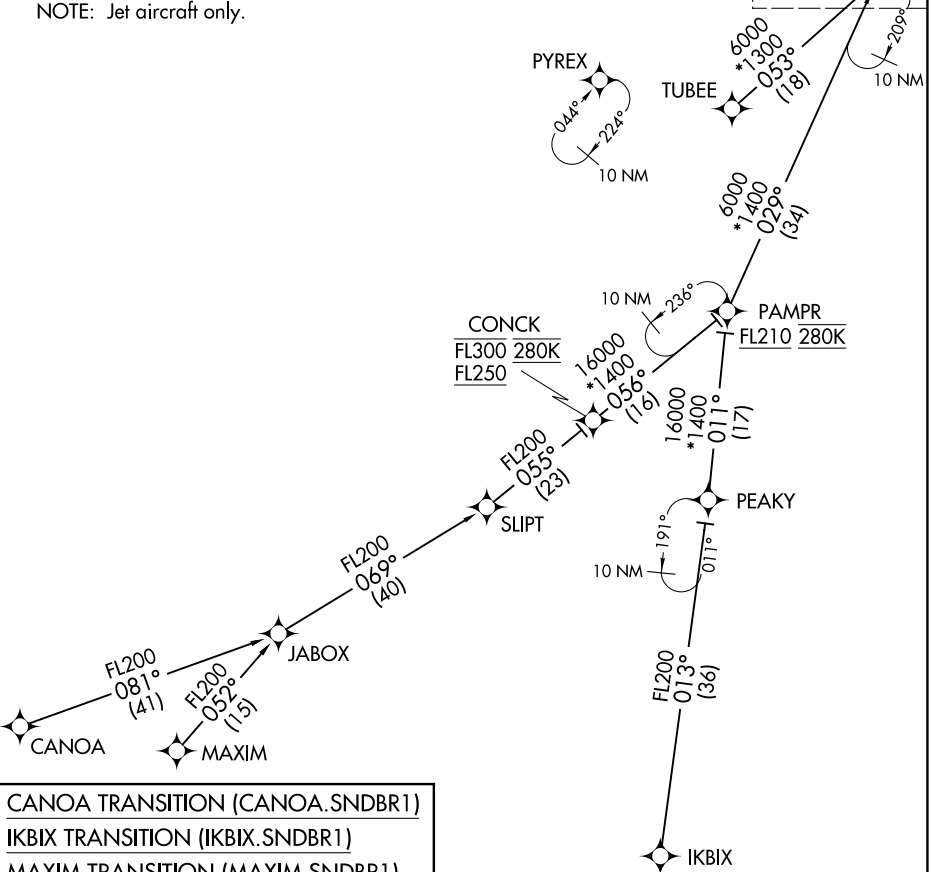
NOTE: Descend via MACH number until 280K. Maintain 280K
 until slowed by the STAR or assigned by ATC.

NOTE: PAMPR TRANSITION, ATC assigned only.

NOTE: TUBEE TRANSITION ATC assigned at or above FL240 only.

NOTE: Jet aircraft only.

See following page for Arrival Routes.
 SNDBR



CANOA TRANSITION (CANOA.SNDBR1)
 IKBIX TRANSITION (IKBIX.SNDBR1)
 MAXIM TRANSITION (MAXIM.SNDBR1)
 PAMPR TRANSITION (PAMPR.SNDBR1)
 TUBEE TRANSITION (TUBEE.SNDBR1)

NOTE: Chart not to scale.

SE-3, 07 OCT 2021 to 04 NOV 2021

SE-3, 07 OCT 2021 to 04 NOV 2021

SNDBR ONE ARRIVAL (RNAV) Transition Routes

MIAMI, FLORIDA