

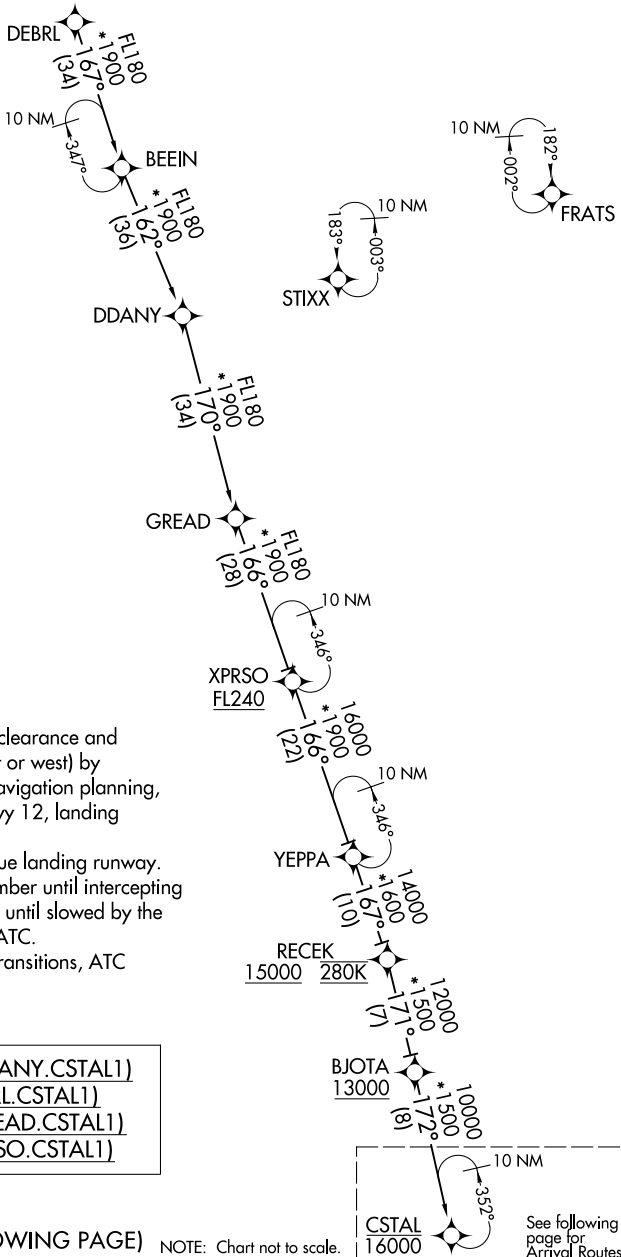
# CSTAL ONE ARRIVAL (RNAV) Transition Routes

MIAMI, FLORIDA

MIAMI APP CON  
 124.85 263.025  
 KHST ATIS \*  
 132.275 269.9  
 MIA D-ATIS  
 119.15  
 TMB ATIS  
 124.0  
 X51 AWOS-3  
 118.375

RNAV 1 - DME/DME/IRU or GPS.

RADAR required for non-GPS aircraft.



- NOTE: Jet aircraft only.
- NOTE: Expect "descend via" clearance and landing direction (east or west) by ARTCC. For vertical navigation planning, landing east, select Rwy 12, landing west, select Rwy 26L.
- NOTE: MIA approach will issue landing runway.
- NOTE: Descend via mach number until intercepting 280K. Maintain 280K until slowed by the STAR or assigned by ATC.
- NOTE: GREAD and XPRSO Transitions, ATC assigned only.

DDANY TRANSITION (DDANY.CSTAL1)  
DEBRL TRANSITION (DEBRL.CSTAL1)  
GREAD TRANSITION (GREAD.CSTAL1)  
XPRSO TRANSITION (XPRSO.CSTAL1)

(CONTINUED ON FOLLOWING PAGE) NOTE: Chart not to scale.



See following page for Arrival Routes.

SE-3, 07 OCT 2021 to 04 NOV 2021

SE-3, 07 OCT 2021 to 04 NOV 2021