

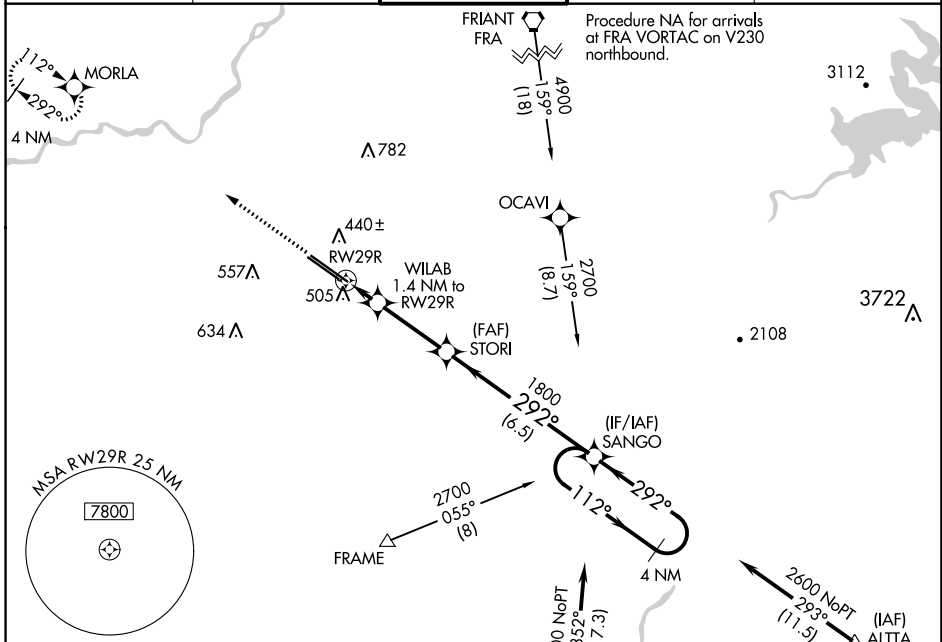
WAAS CH 81803 W29A	APP CRS 292°	Rwy Idg 9227 TDZE 333 Apt Elev 336
---------------------------------	------------------------	---

RNAV (GPS) RWY 29R

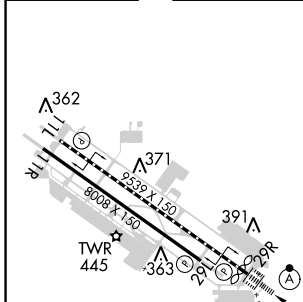
FRESNO YOSEMITE INTL (FAT)

<p>For uncompensated Baro-VNAV systems, LNAV/VNAV NA below 0°C (32°F) or above 54°C (130°F). DME/DME RNP-0.3 NA.</p>	<p>ALSF-2</p>	<p>MISSED APPROACH: Climb to 2000 direct MORLA and hold.</p>
--	---------------	--

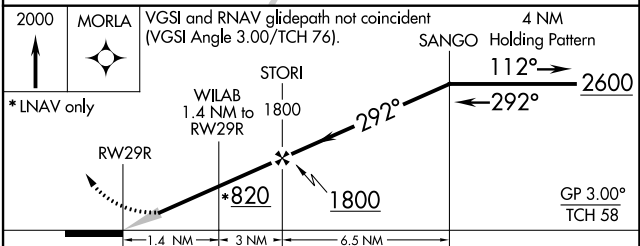
<p>ATIS 121.35 273.6</p>	<p>FRESNO APP CON 119.6 351.95</p>	<p>FRESNO TOWER 118.2 251.1</p>	<p>GND CON 121.7 348.6</p>	<p>CLNC DEL 124.35 348.6</p>
-------------------------------------	---	--	---------------------------------------	---



ELEV 336	D	TDZE 333
----------	----------	----------



REIL Rwy 11L and 11R
HIRL Rwy 11L-29R
MIRL Rwy 11R-29L
TDZ/CL Rwy 29R



CATEGORY	A	B	C	D
LPV DA		533/18	200 (200-1/2)	
LNAV/VNAV DA		689/30	356 (400-5/8)	
LNAV MDA	760/24	427 (500-1/2)	760/40	427 (500-3/4)
C CIRCLING	820-1	484 (500-1)	920-1 1/2 584 (600-1 1/2)	920-2 584 (600-2)

SW-2, 07 OCT 2021 to 04 NOV 2021

SW-2, 07 OCT 2021 to 04 NOV 2021