

# RNAV (GPS) RWY 30

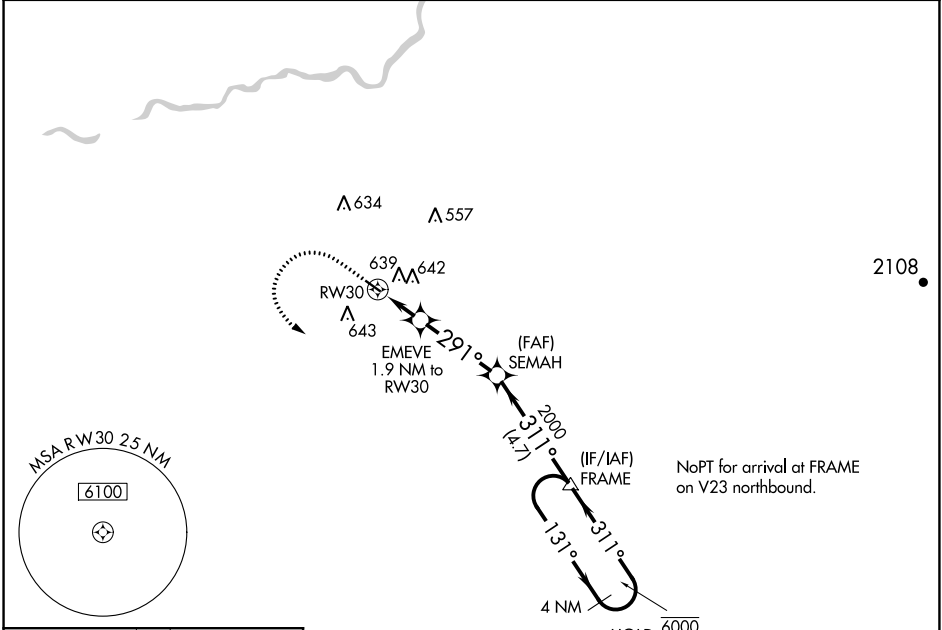
FRESNO CHANDLER EXEC (FCH)

APP CRS <b>291°</b>	Rwy Idg <b>3089</b>
	TDZE <b>280</b>
	Apt Elev <b>280</b>

RNP APCH. MISSED APPROACH: Climb to 1000 then climbing left turn to 2000 direct FRAME and hold.

▼ Straight-in Rwy 30 NA at night, Circling Rwy 30 NA at night.  
Rwy 30 helicopter visibility reduction below 1 SM NA.

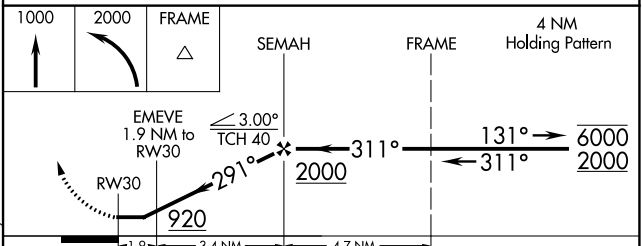
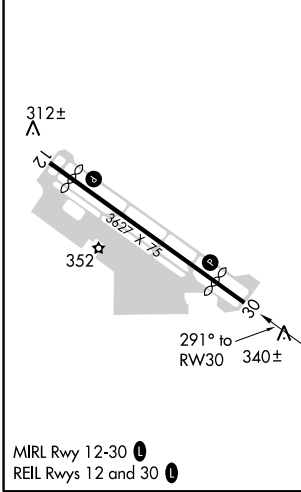
AWOS-3 <b>135.225</b>	FRESNO APP CON <b>119.0 323.25</b>	CLNC DEL <b>119.0</b>	UNICOM <b>123.0 (CTAF) 0</b>
--------------------------	---------------------------------------	--------------------------	---------------------------------



SW-2, 07 OCT 2021 to 04 NOV 2021

SW-2, 07 OCT 2021 to 04 NOV 2021

ELEV <b>280</b>	TDZE <b>280</b>
-----------------	-----------------



CATEGORY	A	B	C	D
LNVA MDA	800-1	520 (600-1)	800-1 3/8 520 (600-1 3/8)	NA
<b>C</b> CIRCLING	960-1	680 (700-1)	960-2 680 (700-2)	NA