

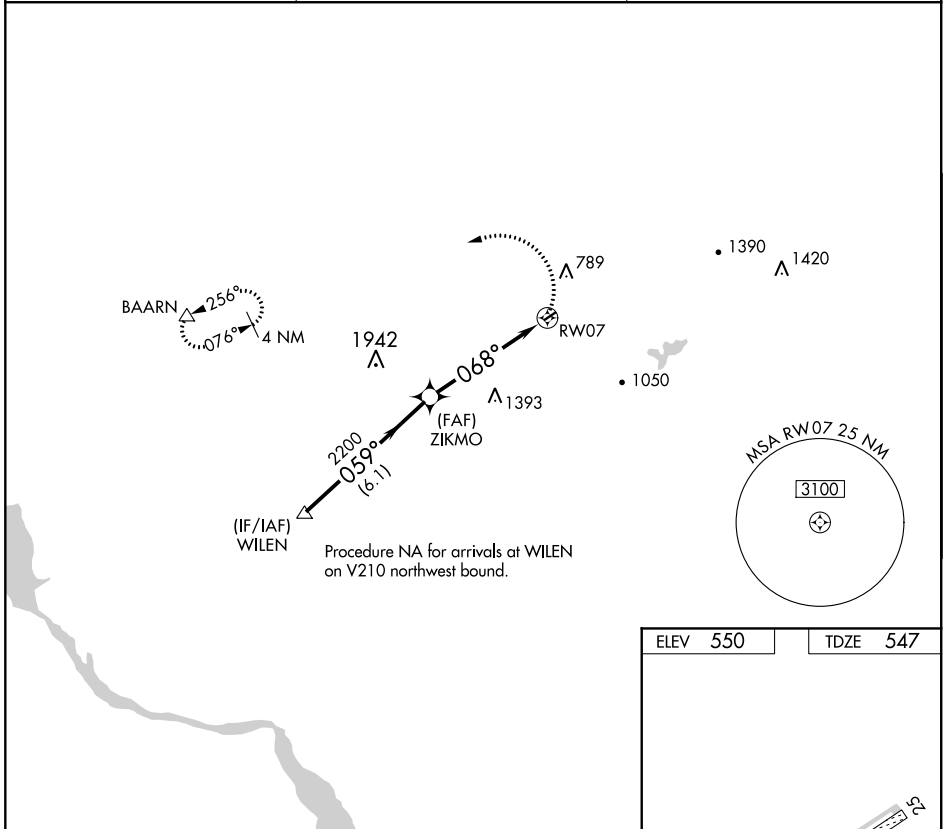
APP CRS	Rwy Idg	<b>1991</b>
<b>068°</b>	TDZE	<b>547</b>
	Apt Elev	<b>550</b>

# RNAV (GPS) RWY 7

KELLER BROTHERS (Ø8N)

RNP APCH.	<p>▼ Procedure NA at night. Rwy 7 helicopter visibility reduction below 1 SM NA. Use Lancaster altimeter setting; when not received, use Reading altimeter setting and increase all MDA 40 feet.</p> <p>▲ NA</p>	MISSED APPROACH: Climbing left turn to 3000 direct BAARN and hold.
-----------	--	--

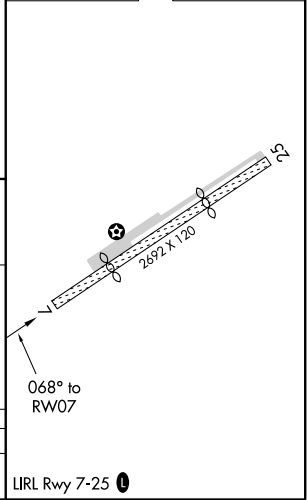
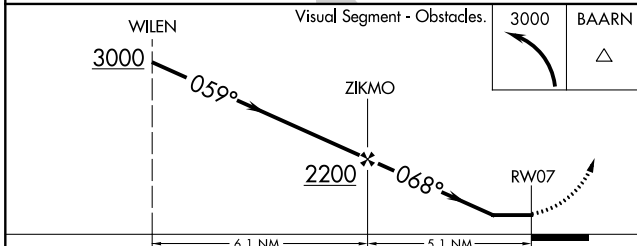
LNS ASOS <b>125.675</b>	HARRISBURG APP CON <b>126.45 281.525</b>	CTAF <b>122.9</b> <b>Ø</b>
----------------------------	---	-------------------------------



NE-4, 09 SEP 2021 to 07 OCT 2021

NE-4, 09 SEP 2021 to 07 OCT 2021

ELEV	<b>550</b>	TDZE	<b>547</b>
------	------------	------	------------



CATEGORY	A	B	C	D
LNAV MDA	1640-1¼ 1093 (1100-1¼)	1640-1½ 1093 (1100-1½)	NA	