

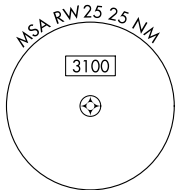
APP CRS	Rwy Idg	1899
248°	TDZE	547
	Apt Elev	550

RNAV (GPS) RWY 25

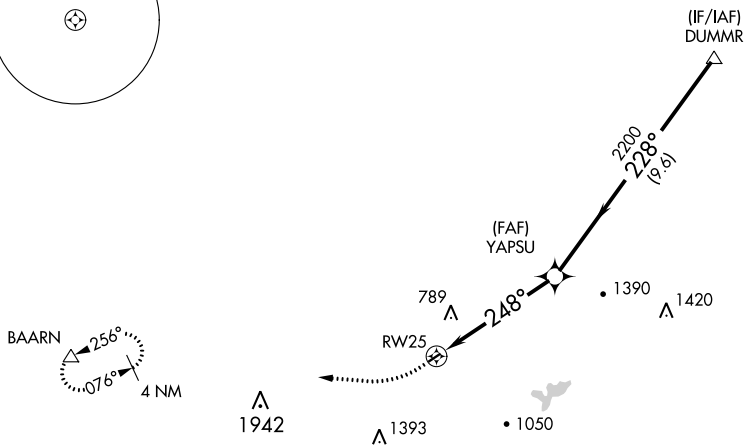
KELLER BROTHERS (Ø8N)

RNP APCH.	<p>▼ Procedure NA at night. Rwy 7 helicopter visibility reduction below 1 SM NA. Use Lancaster altimeter setting; when not received, use Reading altimeter setting and increase all MDA 40 feet and Circling Cat B visibility ¼ mile.</p> <p>▲ NA</p>	MISSED APPROACH: Climbing right turn to 3000 direct BAARN and hold.
-----------	---	---

LNS ASOS 125.675	HARRISBURG APP CON 126.45 281.525	CTAF 122.9
----------------------------	---	----------------------



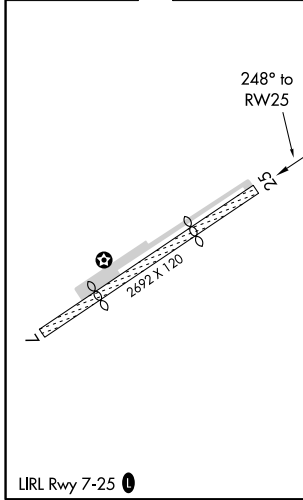
Procedure NA for arrivals at DUMMR on V93 northeast bound, V162 eastbound and V276 southeast bound.



NE-4, 09 SEP 2021 to 07 OCT 2021

NE-4, 09 SEP 2021 to 07 OCT 2021

ELEV 550	TDZE 547
----------	----------



	3000	BAARN	Visual Segment - Obstacles.	DUMMR
				4000
		RWY 25	YAPSU	
		248°	2200	228°
	5.1 NM		9.6 NM	
CATEGORY	A	B	C	D
RNAV MDA	1320-1 773 (800-1)	1320-1¼ 773 (800-1¼)	NA	
CIRCLING	1440-1¼ 890 (900-1¼)	1480-1¼ 930 (1000-1¼)	NA	