

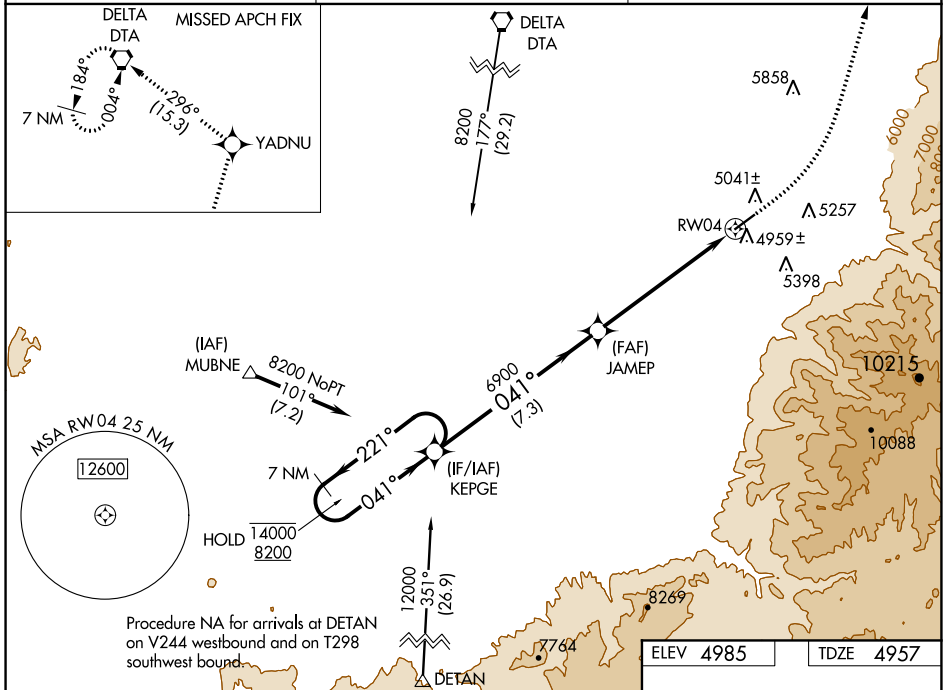
WAAS CH 42917 W04A	APP CRS 041°	Rwy Idg TDZE Apt Elev	5040 4957 4985
--	------------------------	-----------------------------	---

RNAV (GPS) RWY 4

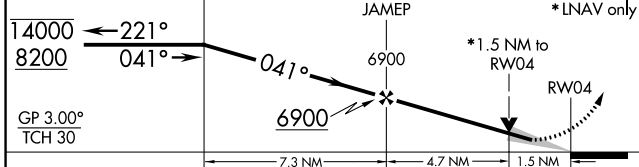
FILLMORE MUNI (FOM)

RNP APCH.	MISSED APPROACH: Climb to 5500 then climbing left turn to 9600 direct YADNU and on track 296° to DTA VORTAC and hold.
▼ For uncompensated Baro-VNAV systems, procedure NA below ▲ -24°C or above 54°C.	

AWOS-3 133.775	SALT LAKE CITY CENTER 125.575 379.275	UNICOM 122.8 (CTAF) 0
--------------------------	---	---------------------------------

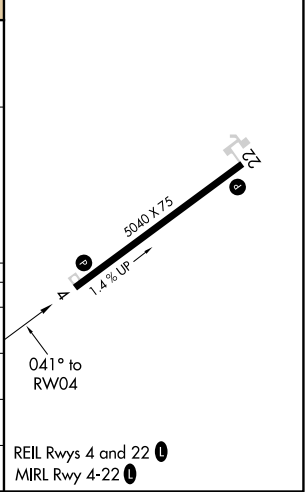


7 NM Holding Pattern	KEPGE	5500	9600	YADNU	tr 296°	DTA
		↑	↶	✦		◻
		JAMEP				*LNAV only



CATEGORY	A	B	C	D
LPV DA	5214-1 257 (300-1)			NA
LNAV/VNAV DA	5315-1 358 (400-1)			NA
LNAV MDA	5420-1	463 (500-1)	5420-1½ 463 (500-1½)	NA
CIRCLING	5620-1	635 (700-1)	6200-3 1215 (1300-3)	NA

ELEV 4985	TDZE 4957
-----------	-----------



REIL Rwy 4 and 22 0
MIRL Rwy 4-22 0

SW-4, 09 SEP 2021 to 07 OCT 2021

SW-4, 09 SEP 2021 to 07 OCT 2021