

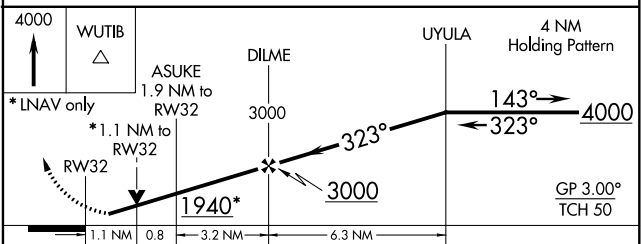
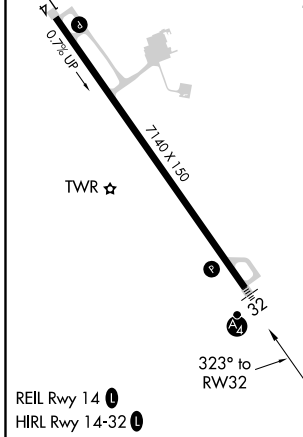
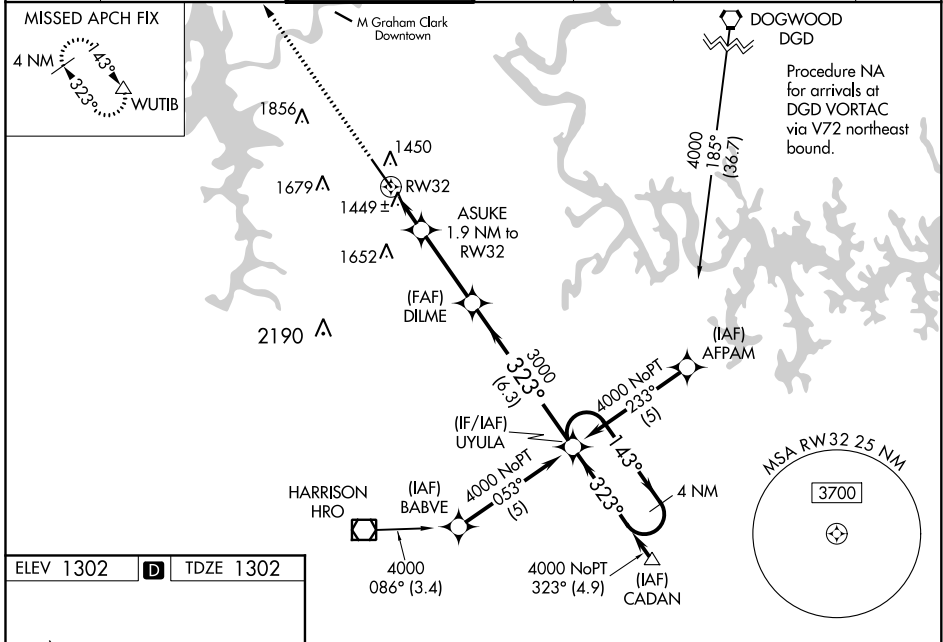
WAAS CH 93911 W32A	APP CRS 323°	Rwy Idg 7140 TDZE 1302 Apt Elev 1302
--	------------------------	---

RNAV (GPS) RWY 32

BRANSON (BBG)

RNP APCH.	MALSF 	MISSED APPROACH: Climb to 4000 direct WUTIB and hold.
⚠ When local altimeter setting not received, use Harrison altimeter setting: increase LPV DA to 1549 feet; increase LNAV/VNAV DA to 1804 feet and all visibilities ½ SM; increase all MDAs 60 feet and visibility Cats C and D ½ SM. VDP and Baro-VNAV NA when using Harrison altimeter setting. For uncompensated Baro-VNAV systems, LNAV/VNAV NA below -17°C (2°F) or above 46°C (114°F). Inop table does not apply.		

ATIS 124.625	SPRINGFIELD APP CON 126.35	BRANSON TOWER * 128.15 (CTAF) 0	GND CON 118.4	CLNC DEL 118.4	SPRINGFIELD CLNC DEL 126.35 (When tower closed)	UNICOM 122.95
------------------------	--------------------------------------	---	-------------------------	--------------------------	--	-------------------------



CATEGORY	A	B	C	D
LPV DA	1502-1		200 (200-1)	
LNAV/VNAV DA	1757-1½ 455 (500-1½)			
LNAV MDA	1700-1 398 (400-1)			1700-1¼ 398 (400-1¼)
CIRCLING	1760-1 458 (500-1)	1900-1 598 (600-1)	2220-2¾ 918 (1000-2¾)	2220-3 918 (1000-3)

NC-3, 09 SEP 2021 to 07 OCT 2021

NC-3, 09 SEP 2021 to 07 OCT 2021