

WAAS CH <b>42733</b> <b>W18A</b>	APP CRS <b>181°</b>	Rwy Idg TDZE Apt Elev	<b>4021</b> <b>219</b> <b>219</b>
--	------------------------	-----------------------------	---

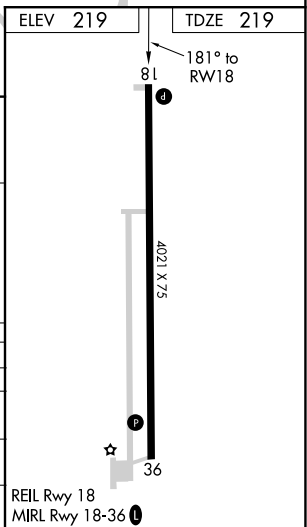
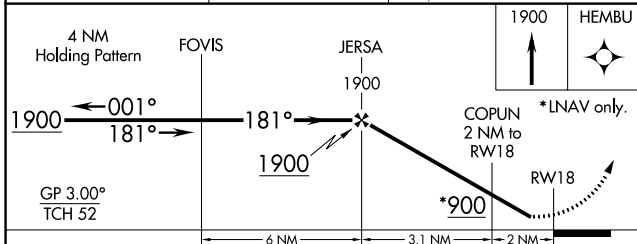
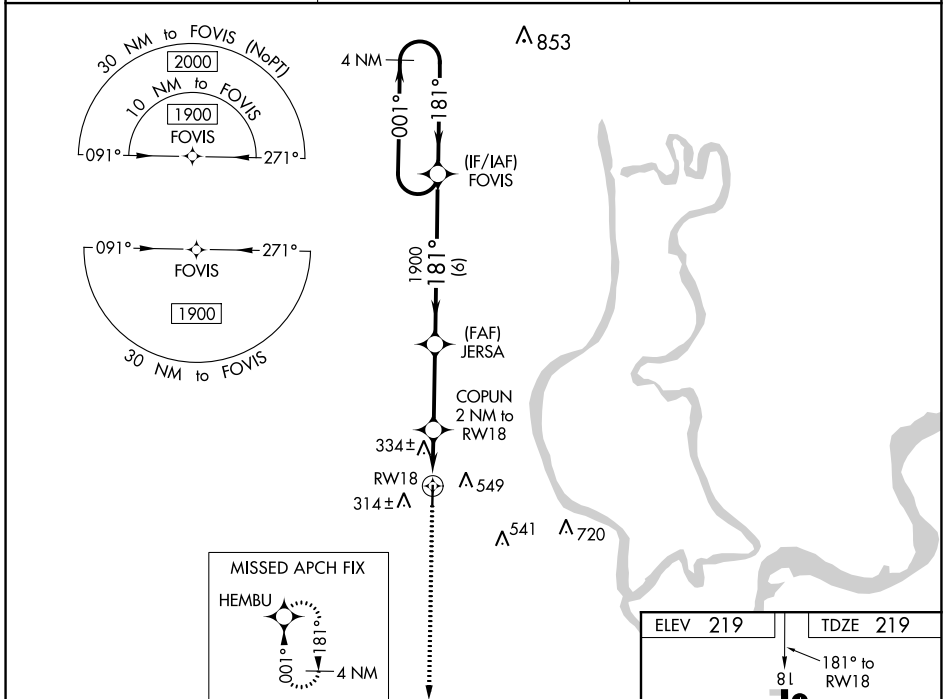
# RNAV (GPS) RWY 18

MARIANNA/LEE COUNTY-STEVE EDWARDS FLD (6M7)

**▽** Baro-VNAV NA. DME/DME RNP-0.3 NA. Helicopter visibility reduction below 1 SM NA.  
**△** NA Rwy 18 Straight-in and Circling Minimums NA at night. Use Tunica altimeter setting, when not available use West Memphis altimeter setting and increase all DA 25 feet and all MDA 40 feet, increase LPV all Cats and LNAV/VNAV all Cats visibility 1/8 mile and Circling Cat C visibility 1/4 mile.

**MISSED APPROACH:**  
Climb to 1900 direct HEMBU and hold.

UTA AWOS-3 <b>118.075</b>	APP CON <b>135.3 335.8</b>	UNICOM <b>122.8 (CTAF)</b>
------------------------------	-------------------------------	-------------------------------



CATEGORY	A	B	C	D
LPV DA	538-1	319 (400-1)		NA
LNAV/VNAV DA	531-1	312 (400-1)		NA
LNAV MDA	660-1	441 (500-1)	660-1 3/8 441 (500-1 3/8)	NA
<b>C</b> CIRCLING	920-1	701 (800-1)	920-2 701 (800-2)	NA

SC-1, 09 SEP 2021 to 07 OCT 2021

SC-1, 09 SEP 2021 to 07 OCT 2021