

RNAV (GPS) RWY 32

SAN MARTIN (E16)

APP CRS	Rwy Idg	3095
321°	TDZE	284
	Apt Elev	284

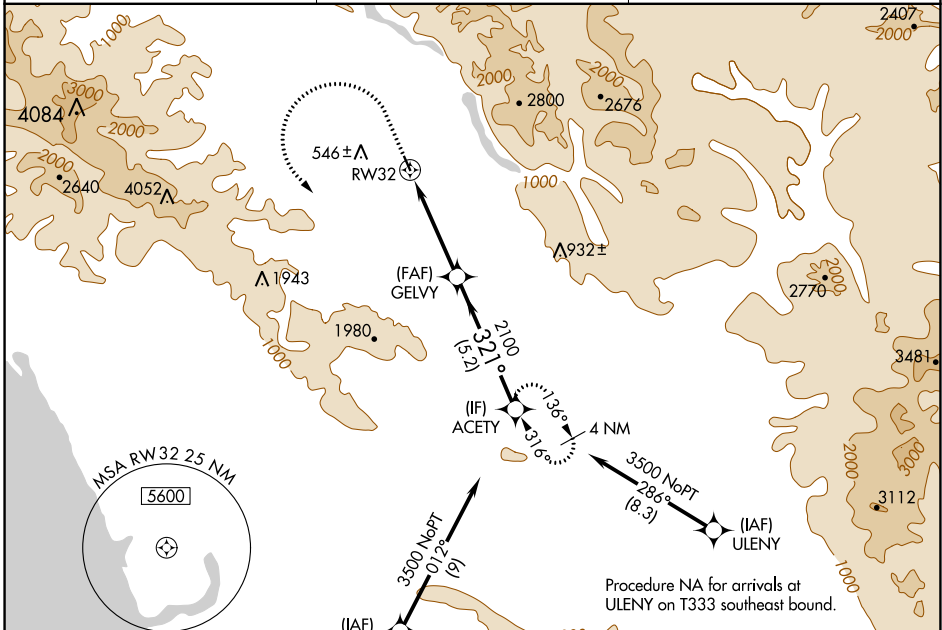
RNP APCH.
 ⚠ Circling NA southwest of Rwy 14-32. Rwy 32 helicopter visibility reduction below ¾ SM NA.

MISSED APPROACH: Climb to 1700 then climbing left turn to 3500 direct ACETY and hold.

AWOS-3P
118.35

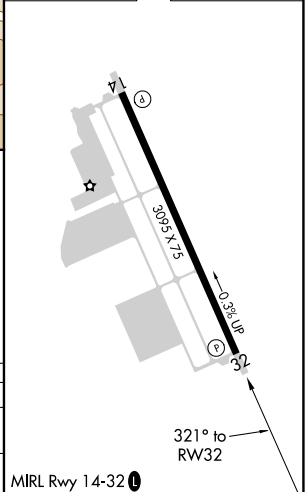
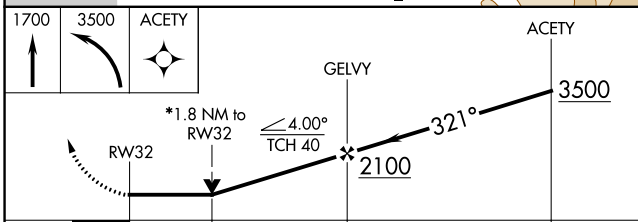
NORCAL APP CON
124.525 348.675

UNICOM
122.7 (CTAF) 0



Procedure NA for arrival on SNS VORTAC airway radials 264 CW 068.
 Procedure NA for arrivals at ULENY on T333 southeast bound.

ELEV 284	TDZE 284
----------	----------



CATEGORY	A	B	C	D
LNAV MDA	1060-1 776 (800-1)	1060-1¼ 776 (800-1¼)	NA	
CIRCLING	1060-1 776 (800-1)	1160-1¼ 876 (900-1¼)	NA	

SW-2, 09 SEP 2021 to 07 OCT 2021

SW-2, 09 SEP 2021 to 07 OCT 2021